

Specification	Aluminum air termination mast multi-part with 8-leg support QR System made of stainl. steel. With 8 threaded pieces made of stainl. steel. Height of the mast: 15,0m. Weight: 97kg For wind speed zones I – IV For ground category III- IV (max. gust speed 175 km/h)
Article No.	QR 00 28

Customs tariff No.: 85389099

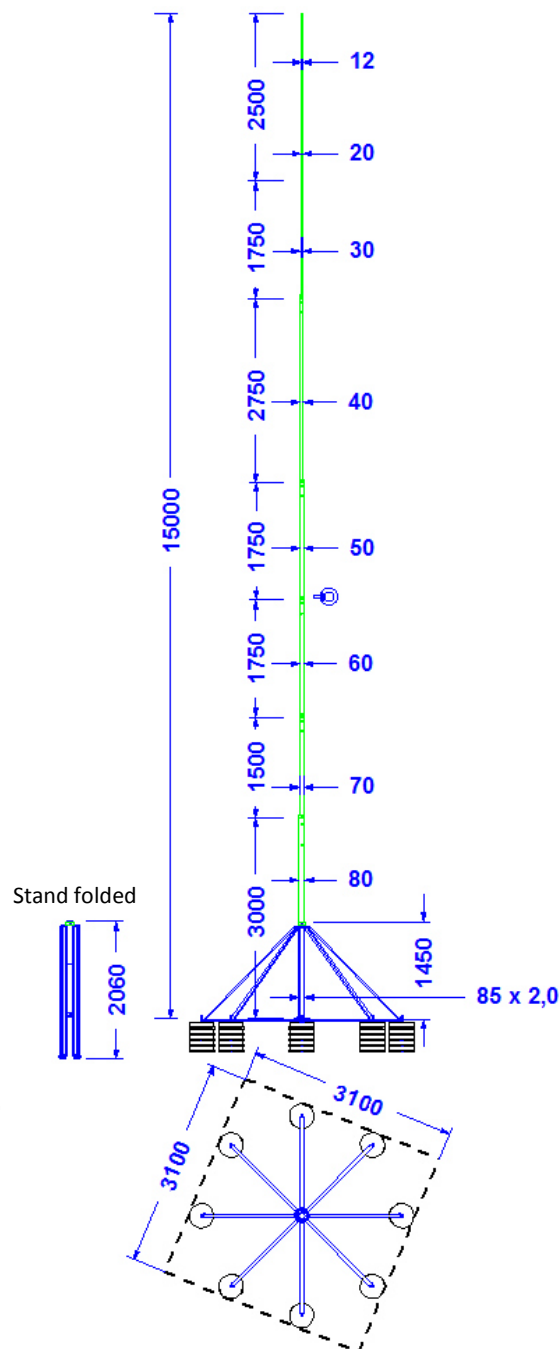
This mast can also be erected with the help of an erection aid, which can be ordered separately (it can be provided on loan, too) from one person without any further means!
 An assembly instruction can be provided.

The transport length for the 15m-mast is only 3m!

The mast can be erected with 4 persons and a rope WITHOUT a crane!



Erection aid
Article no. QR 66 48.
Available separately (see text box to the upper left!)



Description	Ø	Material	Lenght	Wind speed zone	Remarks
Mast main tube 1	85,0mm x 2,0mm	Aluminium tube	3,00m	Wind speed zone I-IV (accord. to Euro Code 1 as well as DIN EN 1991 and DIN EN 1993. At 1,5-fold safety). Max. gust speed 175 km/h. Applicable for building heights below 40m and area heights below 600m above NN. Higher buildings or areas as well as icing and self-oscillation are to be considered. separately if necessary.	1. All connections are made of stainless steel. 2. The concrete bases and the respective protective pads are not part of the product. 3. System-weight including the concrete bases: 777 kg. 4. Surface loading rate: 81 kg/m² 5. Slope adjustment up to 5° is possible. 6. Pack size: 3000mm long and 200mmØ Weight: 97 kg. 7. Weight of the mast 30 kg. 8. Weight of the stand 57 kg.
Mast main tube 2	70,0mm x 5,0mm	Aluminium tube	1,50m		
Mast main tube 3	60,0mm x 5,0mm	Aluminium tube	1,75m		
Mast main tube 4	50,0mm x 5,0mm	Aluminium tube	1,75m		
Mast main tube 5	40,0mm x 5,0mm	Aluminium tube	2,75m		
Mast main tube 5	30,0mm x 5,0mm	Aluminium tube	1,75m		
Mast tip	1,5m 20mm, 1m 12mm	Aluminium rods	2,50m		
Stand segments		Support segments: 50x30x2,5mm Foot segments: 50x30x2,5mm	Support segments: 2000mm Foot segments: 1435mm		
Stand central tube	88,9mm x 1,5 mm	Stainless steel tube 1.4301	1450 mm		