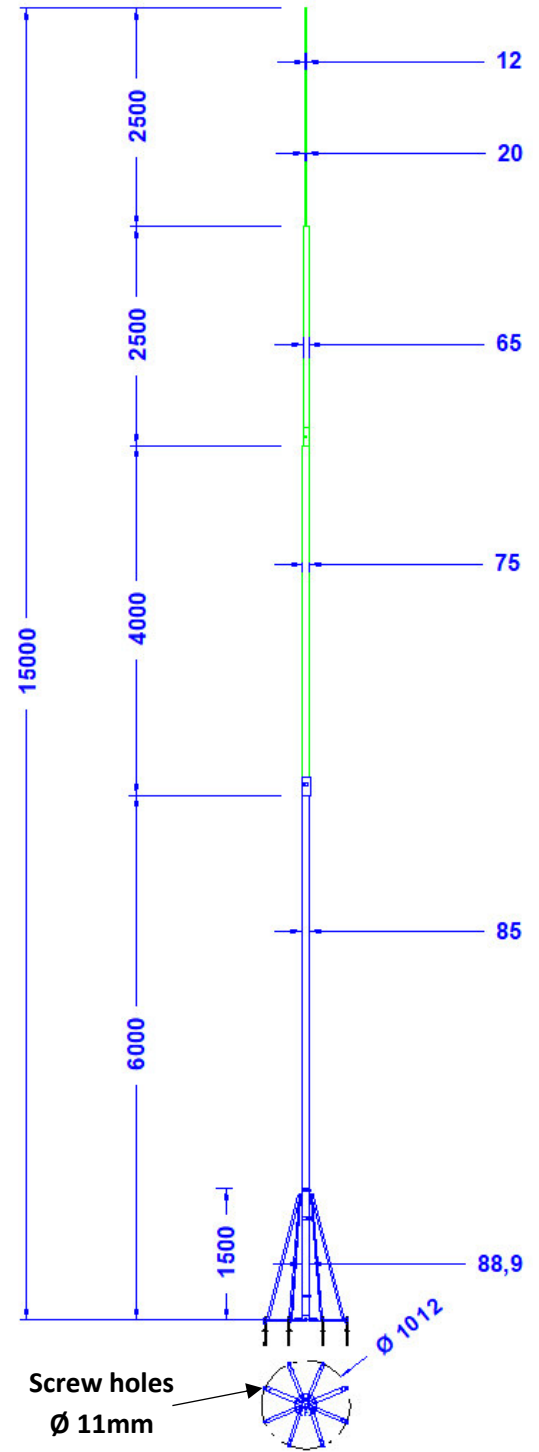


Specification	Stainless steel mast 15,0m high, multi-part, with 6-leg stand made of stainless steel. For fixing to the surface with screws. Weight: 97 kg For wind speed zones I – II For ground category III- IV (max. gust speed 145 km/h)
Article No.	48 73 44

Remarks for the assembly:

1. The stand has to be fastened to the surface. The surface should be out of concrete or another solid material. Please use the proper screws and dowels for the fastening (M10; not included).
2. The stand has to be assembled first, before fixed to the surface.
3. The mast will be put into the stand after the stand is fixed to the ground. For this a crane or a similar device is needed.



Customs tariff
No.: 85389099

Description	Ø	Material	Length	Wind speed zone	Remarks
Mast main tube 1	85,0mm x 2,0mm	Stainless steel tube	6,00m	Wind speed zone I-II (accord. to Euro Code 1 as well as DIN EN 1991 and DIN EN 1993. At 1,5-fold safety). For ground category II - IV with max. gust speed 145 km/h. Applicable for building heights below 40m and area heights below 600m above NN. Higher buildings or areas as well as icing and self-oscillation are to be considered separately if necessary.	<ol style="list-style-type: none"> 1. All connections are made of stainless steel V2A. 2. Packing size: 3500 mm long and 225 mm Ø Weight: 97 kg. 3. Weight of the mast 75 kg. 4. Weight of the stand 22 kg.
Mast main tube 2	75,0mm x 5,0mm	Aluminium tube	4,00m		
Mast main tube 3	65,0mm x 5,0mm	Aluminium tube	2,50m		
Mast tip	1,5m 20mm, 1m 12mm	Aluminium rods	2,50m		
Stand segments		Stainless steel 1.4301	Support segments: 1550mm Foot segments: 474mm		
Stand central tube	88,9mm x 1,5 mm	Stainless steel tube 1.4301	1500 mm		