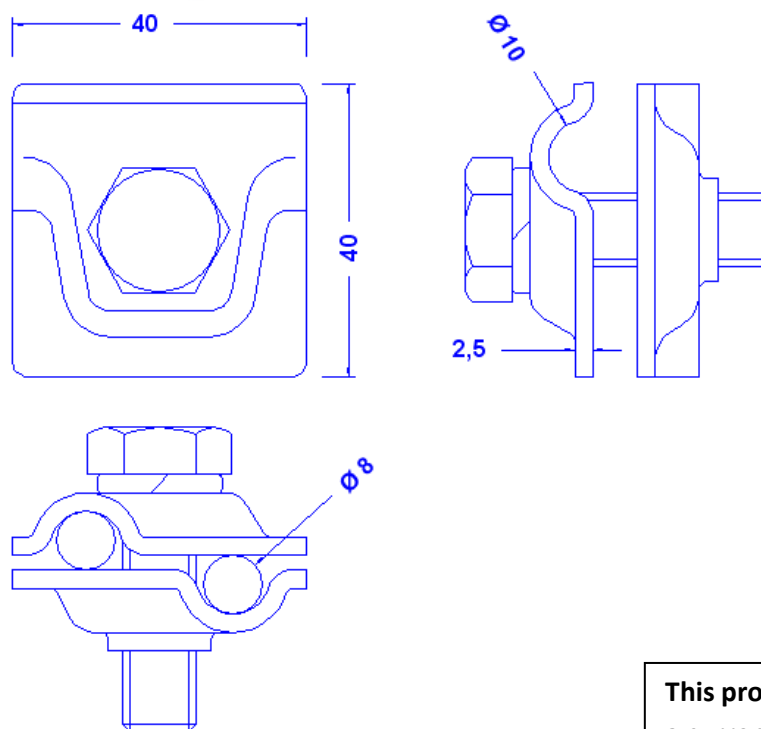
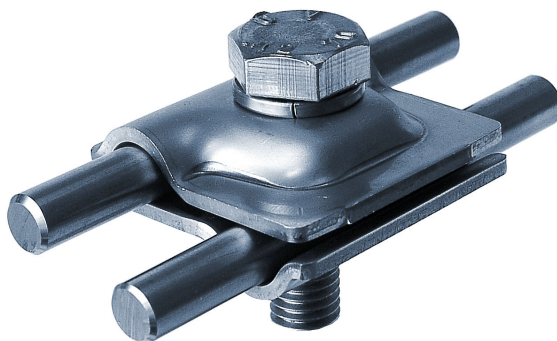


<b>Specification</b>	Multi-purpose clamp for 8-10mm conductor. Stainless steel. Thread in the lower part. Weight: 82g Reference Standard: DIN EN 62561-1
<b>Article No.</b>	<b>42 04 10</b>

Customs tariff No.: 85389099

Suitable as well for use as T-, parallel and cross-clamp.

Experience shows that this clamp is also used in practice as saddle clamp if a sufficient contact surface can be guaranteed.



**This product is build to stand  
a current of 100 kA.**

<b>Description</b>	RoHS2 (Guideline 2011/65/EU) and REACH (Regulation (EG) No.1907/2006): The substance-requirements and all other requirements of this regulations are observed by this product.
<b>Material of the clamp</b>	<b>Stainless steel tape 1.4301</b>
<b>Conductor leading</b>	<b>2 x 8-10mm conductor parallel or crosswise.</b>
<b>Screw connection (all stainless steel)</b>	<b>Screw: DIN933M10X35, spring washer: 10mm</b>
<b>Remarks</b>	<b>Upper part of the clamp with a square hole 11x11mm. Lower part with a thread M10.</b>