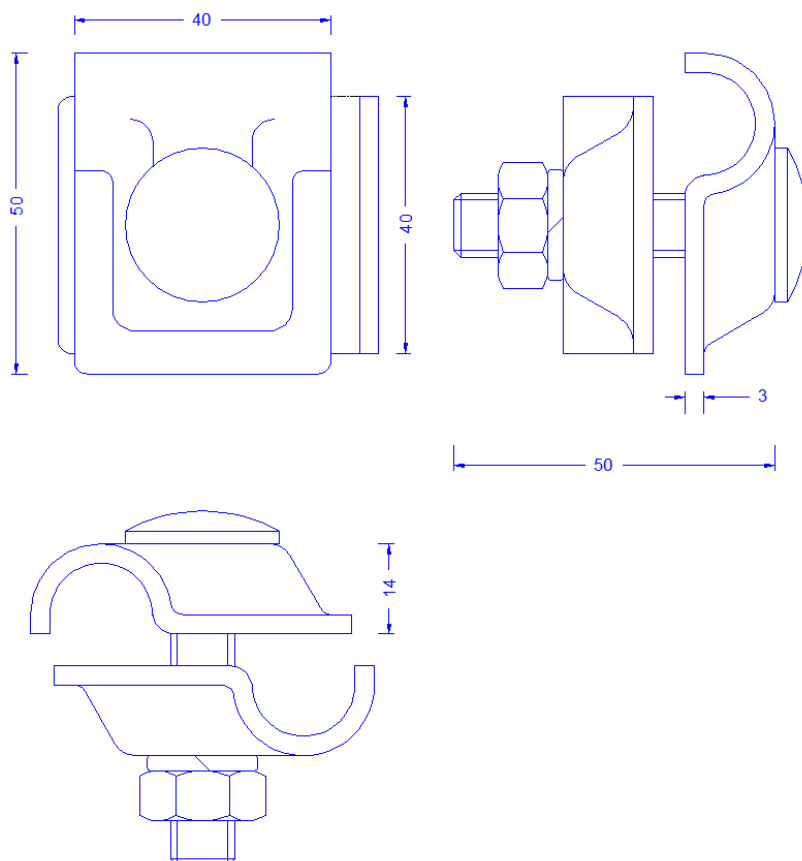


Specification	Multi-purpose clamp for 2 x 16mm conductor. With nut and spring washer. Stainless steel. Weight: 170,00 g Reference standard: DIN EN 62561-1
Article-No.	42 06 16

Customs tariff number.: 85389099



This product can be used as T-, parallel or cross-clamp.

Description	RoHS2 (Guideline 2011/65/EU) and REACH (Regulation (EG) No.1907/2006): The substance-requirements and all other requirements of this regulations are observed by this product.
Material of the clamp	Stainless steel 1.4301
Conductor leading	2 x 16mm conductor parallel or crosswise. Stainless steel 1.4301.
Screw/Nut/spring washer (all stainless steel)	Schraube: DIN603M10X50, Mutter: DIN934M10 Federring: 10mm.