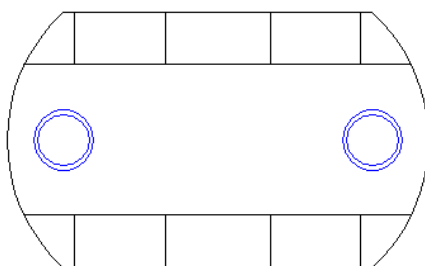
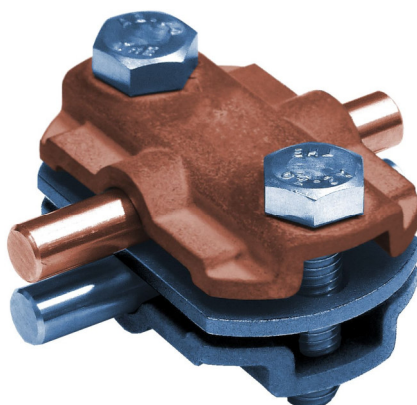
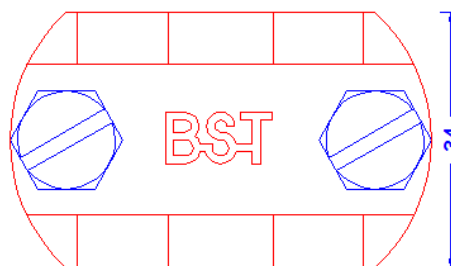


<b>Specification</b>	Connecting-disconnecting clamp, for connection of round cond. 2 x Ø 8-10mm, 2x flat cond. till 30mm or 1 x flat cond. 30mm and 1 x round cond. Ø 8-10mm with intermediate plate in stainless steel. Galv. steel and copper. Weight: 131g Reference standard: DIN EN 62561-1
<b>Article No.</b>	49 60 29

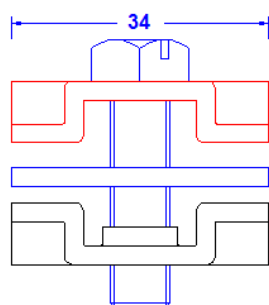
Customs tariff No.: 85389099



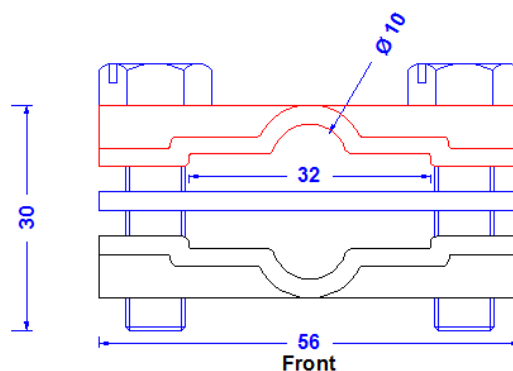
Bottom



Top



Side



Front

<b>Description</b>	RoHS2 (Guideline 2011/65/EU) and REACH (Regulation (EG) No.1907/2006): The substance-requirements and all other requirements of these regulations are observed by this product.
<b>Material of the clamp</b>	Galvanized steel, stainless steel and copper
<b>Screws</b>	2 x DIN933M8X30 stainless steel
<b>Take-up round/flat conductor</b>	Ø 8-10mm / till 30mm