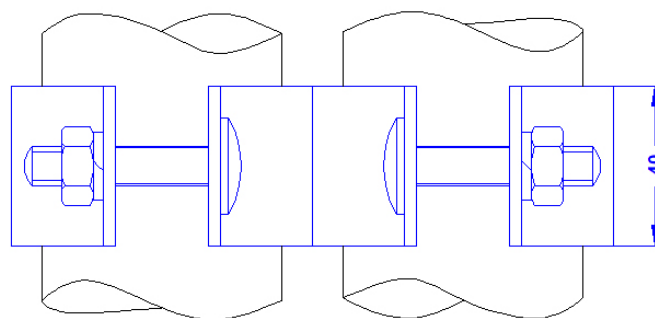
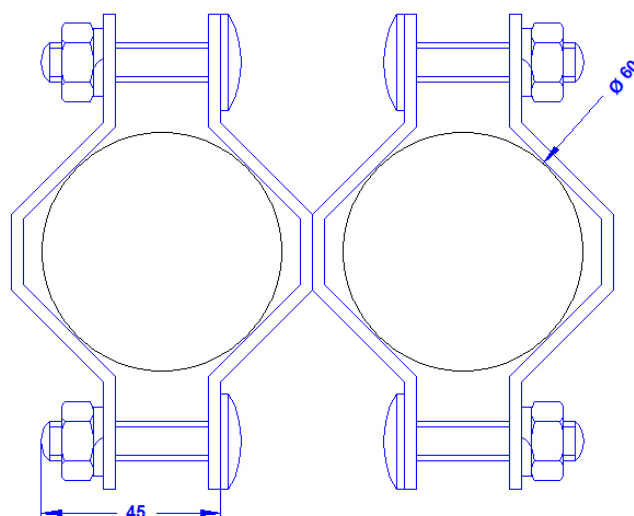
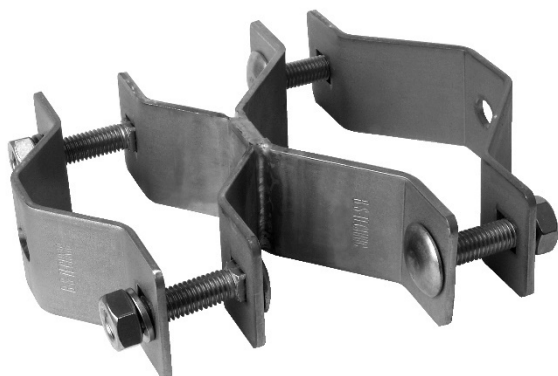


Specification	X-shaped clamp for connection of two pipes 50-60mm Ø, welded. Weight: 650g Stainless steel 1-4301
Article No.	68 01 77

For the connection of one masts 50-60mm Ø with a maximum height of 12m (depending on the number of clamps) with a tube with a Ø of 50-60mm.

Customs tariff No.: 85389099



Description	RoHS2 (Guideline 2011/65/EU) and REACH (Regulation (EG) No.1907/2006): The substance-requirements and all other requirements of this regulations are observed by this product.
Material of the brackets	Stainless steel 1-4301
Fitting of the brackets	2 x for pipes 50-60mm Ø
Screws/nuts/spring washers (all in stainless steel)	4 x DIN603M10x45; 4 x DIN934M10/ 4 x spring washer 10mm