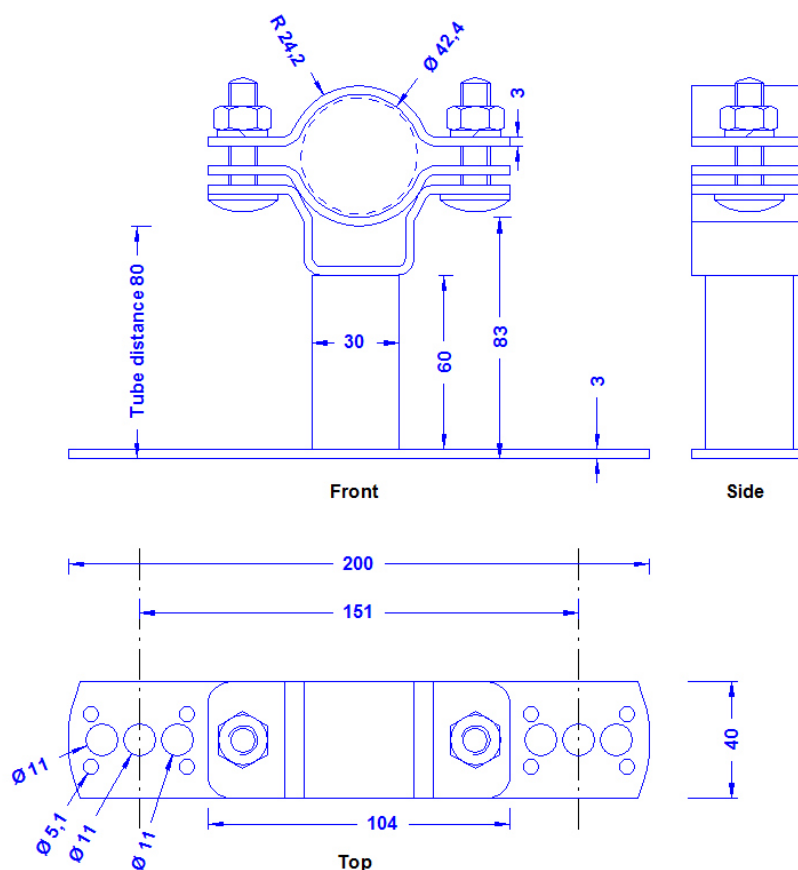
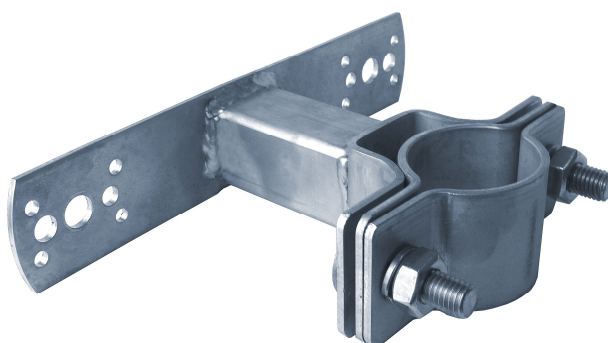


Specification	Pipe clamp for fixing of masts 40-50mm Ø to the wall. Distance to the wall 80mm. Weight: 742 g Stainless steel 1-4301
Article No.	68 01 44

Customs tariff No.: 85389099

All supporting
connections are
welded.



Description	RoHS2 (Guideline 2011/65/EU) and REACH (Regulation (EG) No.1907/2006): The substance-requirements and all other requirements of this regulations are observed by this product.
Material of the clamp/ of the wall holder	Stainless steel 1-4301
Fit of the clamp	For pipes 40-50mm Ø
Screws/nuts/spring washers (all stainless steel)	2 x DIN603M10X40/ 2 x DIN934M10/ 3 x spring washer 10mm