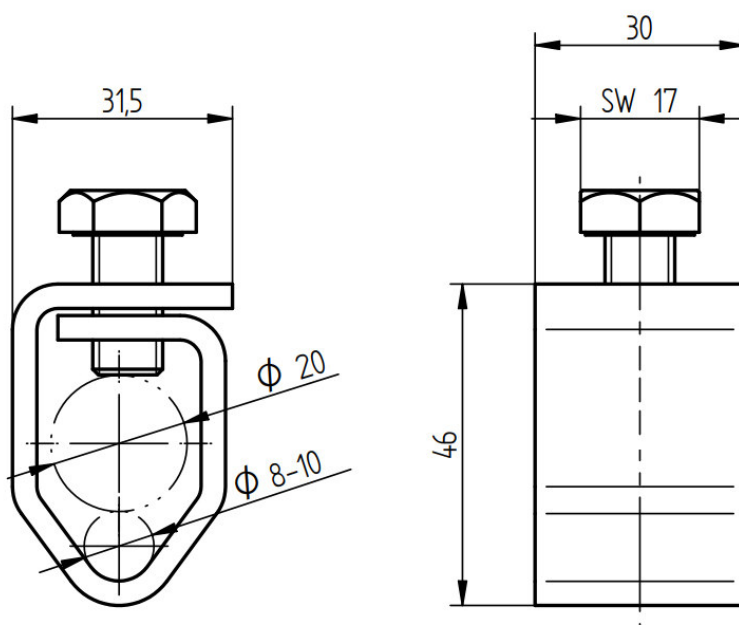
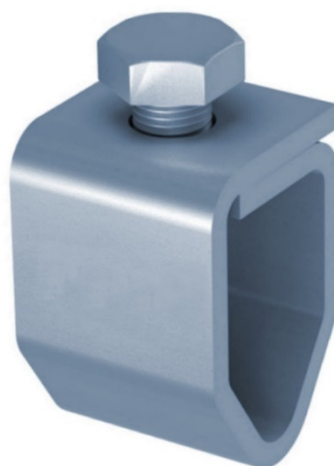


Description	Earthing rod connection clamp with hexagon head screw 10mm. For connecting \varnothing 20mm earth rods with cable 8-10mm \varnothing . Stainless steel. Weight: 131g Reference Standard: DIN EN 62561-1
Article No.	49 44 10

Customs tariff No.: 85389099



Description	RoHS2 (Guideline 2011/65/EU) and REACH (Regulation (EG) No.1907/2006): The substance-requirements and all other requirements of these regulations are observed by this product.
Material of the clamp	Stainless steel
Screw	M10, stainless steel
Take-up conductor	8-10mm \varnothing
Take-up rod	20mm \varnothing