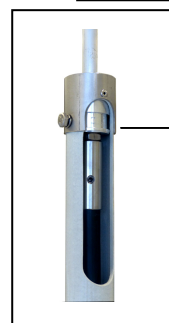


Specification	OBO IsCon® connection adapter for the mast top with thread M16. With 2 clamp screws M8. For screwing on the OBO IsCon® - cable. Stainless steel. Weight: 250g Reference standard: DIN EN 62561-1
Article No.	68 04 42

The end connection will be welded to **IsCon®** - cable by means of the provided heat-shrink tubing.

Customs tariff No.: 85389099



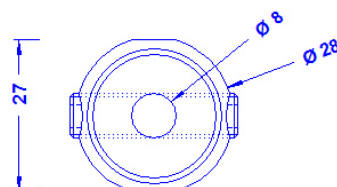
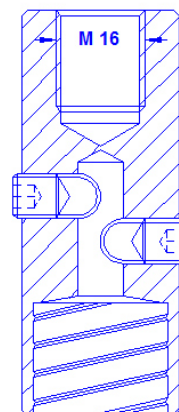
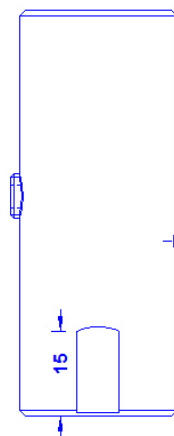
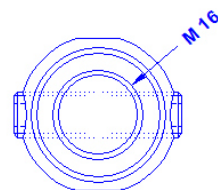
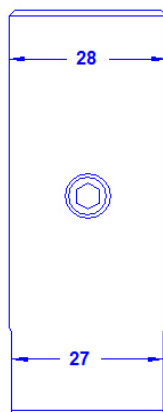
Detail of the connection Adapter



IsCon® - cable connection



Mast top connection



Description	
Material of the connection element	Stainless steel
Connection	For screwing on the OBO IsCon® cable.
Screws	2 x DIN914M8X10 Imbus; stainless steel.