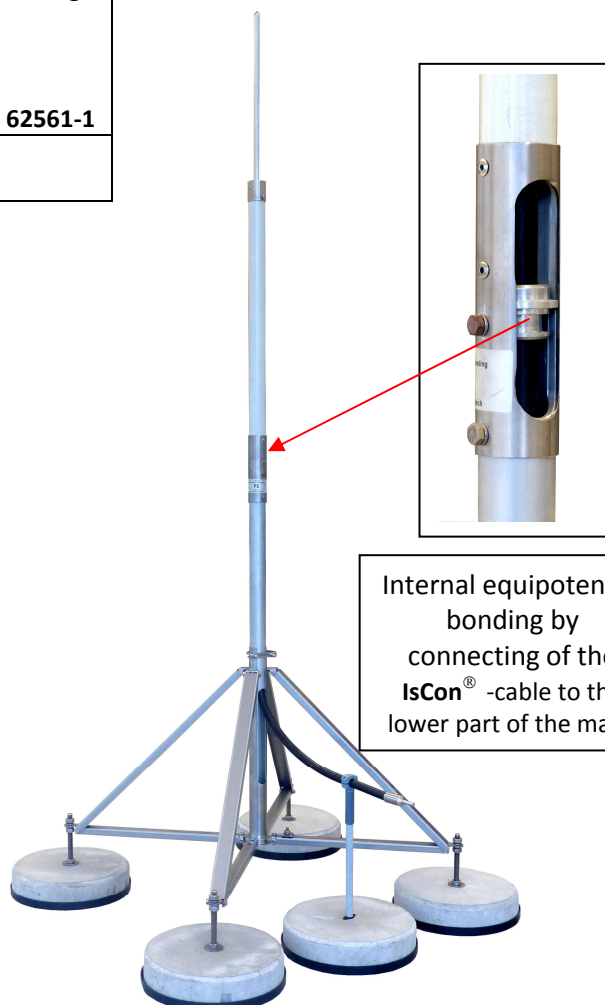
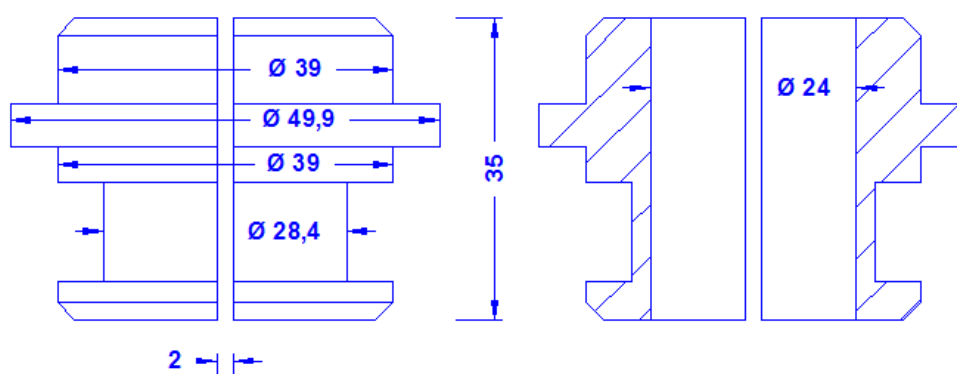


Specification	OBO IsCon <sup>®</sup> potential connector for the connection of the IsCon <sup>®</sup> - cable to the ISO-mast if the cable leading is inside the mast. Aluminium. Weight: 59g Reference standard: DIN EN 62561-1
Article No.	68 05 76

Customs tariff No.: 85389099



Internal equipotential bonding by connecting of the IsCon<sup>®</sup> -cable to the lower part of the mast.



Front

Cross section

Description	RoHS2 (Guideline 2011/65/EU) and REACH (Regulation (EG) No.1907/2006): The substance-requirements and all other requirements of this regulations are observed by this product.
Potential-connector Connection	Aluminium Connection of the OBO isCon <sup>®</sup> cable to the ISO-mast if the cable leading is inside the mast.