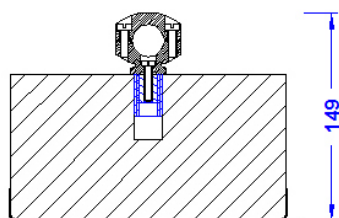
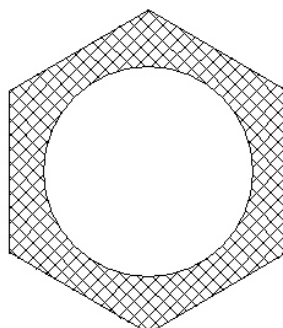
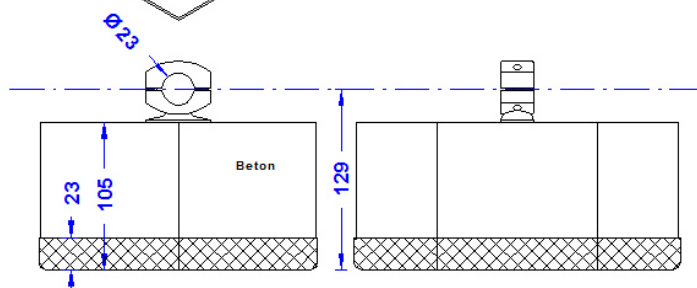
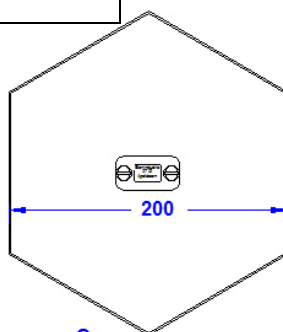


Specification	Concrete base, weight 7 kg, hexagonal, with integrated protective pad, with screwed-on nylon clamp for insulating conductor leading on the flat roof. Ø 23mm.
Article No.	68 05 59

Customs tariff No.: 68109900



Description	
Weight of the protective pad	7 kg
Clamp	Made of nylon for 23mm Ø - conductor with nylon screws for insulating conductor leading.
Material of the fastening screw	Polyamid, white
Material of the inner thread	Stainless steel
Material of the base	Concrete (C45/55)
Material of the protective pad	Hard plastic, black