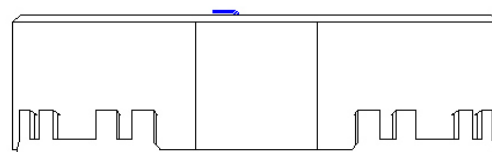
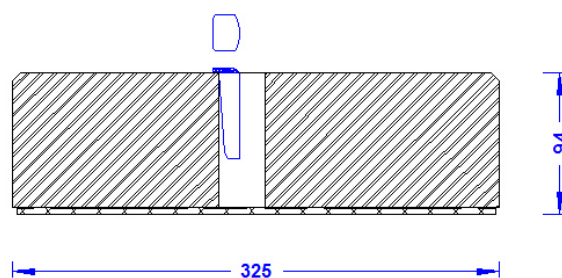
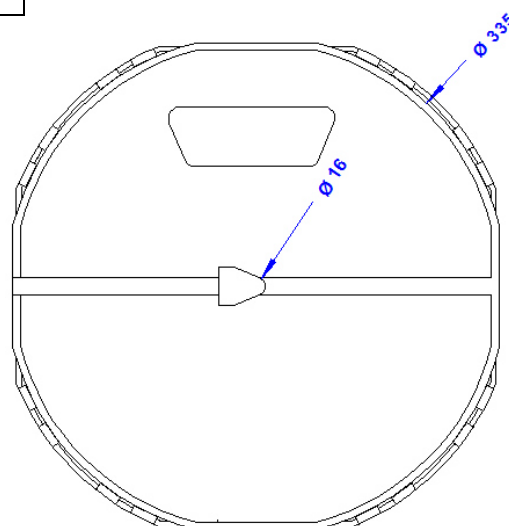


|                      |  |
|----------------------|--|
| <b>Specification</b> | Concrete base for wedging. Weight 17kg. For a lightning rod 16mm with integrated protective pad made of plastic. With stainless steel wedge. Weight: 17,5 kg |
| <b>Article No.</b>   | <b>48 03 12</b>  |

Customs tariff No.: 68109900

**Stainless steel wedge for the  
concrete base  
Article No. 48 03 02**



| <b>Description</b>                    |                               |
|---------------------------------------|-------------------------------|
| <b>Weight with protective pad</b>     | <b>17,5 kg</b>                |
| <b>Central intake</b>                 | <b>16mm Ø lightning rod</b>   |
| <b>Material of the base</b>           | <b>Concrete (C45/55)</b>      |
| <b>Material of the protective pad</b> | <b>Hard plastic, black</b>    |
| <b>Material of the wedge</b>          | <b>Stainless steel 1.4301</b> |