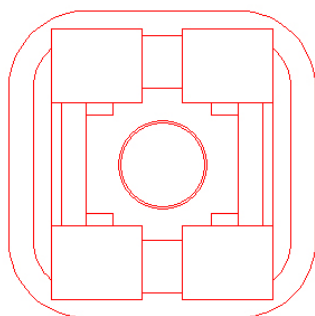
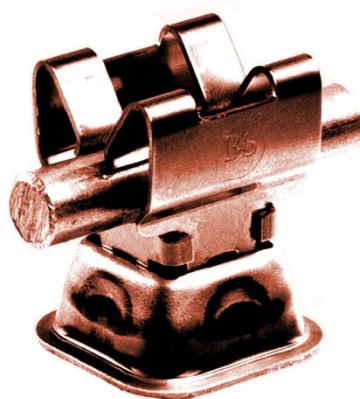
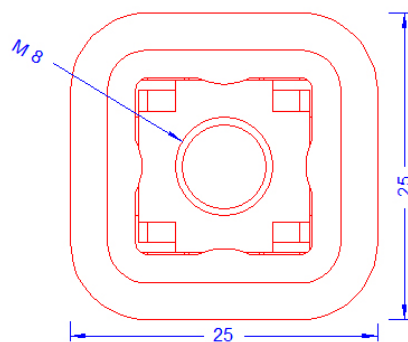


Specification	Duplo-Holder made of stainless steel copper plated, for 8 mm conductor, cond. height 18mm, with copper base. Weight: 14g Reference standard: DIN EN 62561-4
Article No.	11 07 20

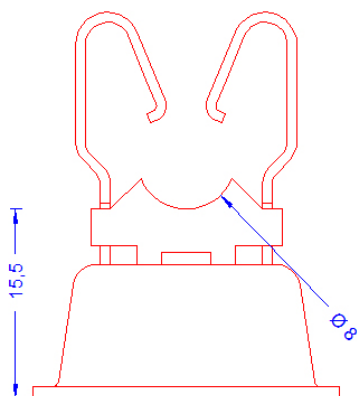
Customs tariff No.: 85389099



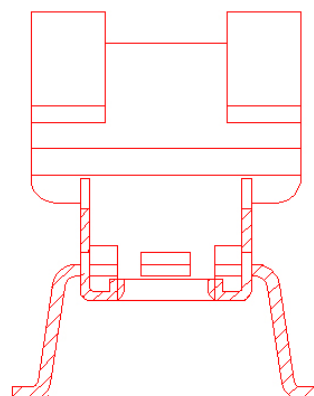
Top



Bottom



Front



Cut

Description	RoHS2 (Guideline 2011/65/EU) and REACH (Regulation (EG) No.1907/2006): The substance-requirements and all other requirements of these regulations are observed by this product.
Holder	Stainl. steel holder – copper plated, 8mm conductor leading, thread M8, made of 1 4310 spring band steel.
Base	Metal base 11mm high made of copper.