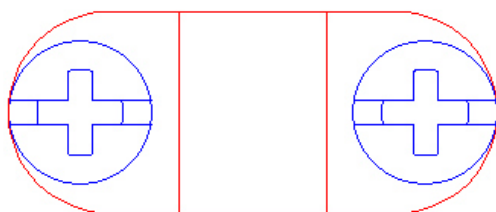
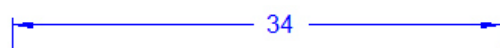
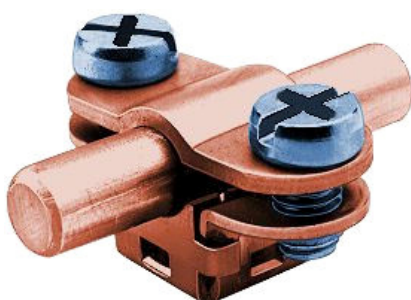
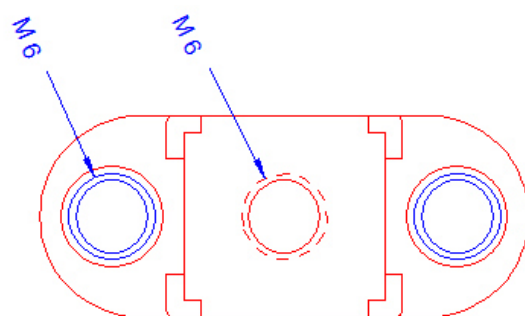


<b>Specification</b>	Conductor holder for 6-11mm, clamping. Conductor height 7,5mm, with stainless steel combined slot screws. Weight: 18g Reference Standard: DIN EN 62561-4
<b>Article No.</b>	<b>10 25 20</b>

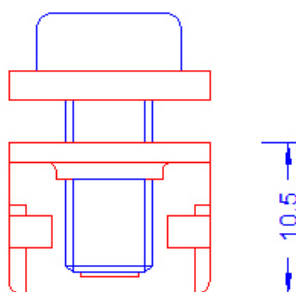
Customs tariff No.: 85389099



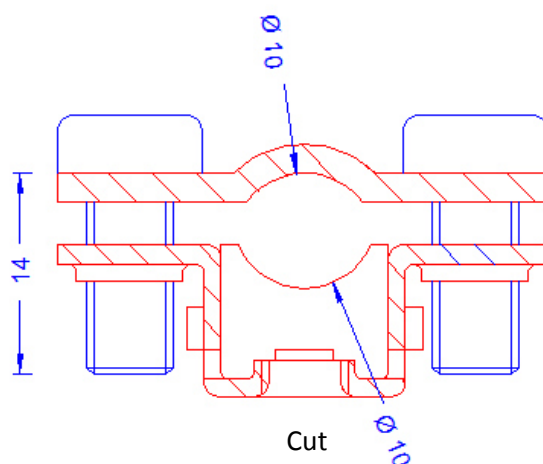
Top



Bottom



Side



Cut

<b>Description</b>	RoHS2 (Guideline 2011/65/EU) and REACH (Regulation (EG) No.1907/2006): The substance-requirements and all other requirements of these regulations are observed by this product.
<b>Holder</b>	Conductor holder for 6-11mm, clamping, with thread M6 in the bottom, out of copper, with a 2-screw cleat, with stainless steel combined slot screws M6X14mm.