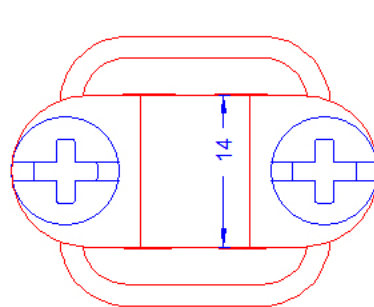
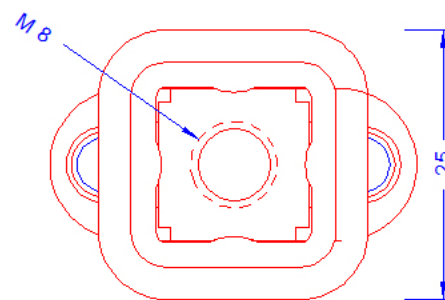


Specification	Conductor holder for conductor 6-11mm, clamping, with copper base. Conductor height 18mm, with stainless steel combined slot screws. Weight: 28g Reference Standard: DIN EN 62561-4
Article No.	10 07 20

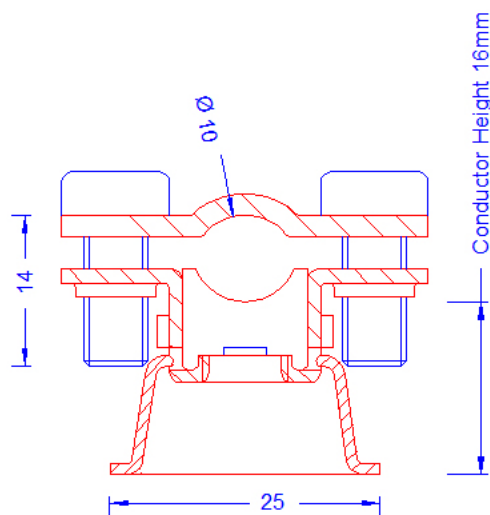
Customs tariff No.: 85389099



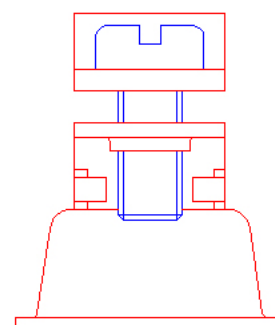
Top



Bottom



Cut



Side

Description	RoHS2 (Guideline 2011/65/EU) and REACH (Regulation (EG) No.1907/2006): The substance-requirements and all other requirements of these regulations are observed by this product.
Holder	Conductor holder for 6-11mm Ø, clamping, with thread M8 in the Bottom. Out of copper 1.4301, with 2-screw cleat, with 2 combined slot screws M6X14 out of stainless steel.
Base	Copper