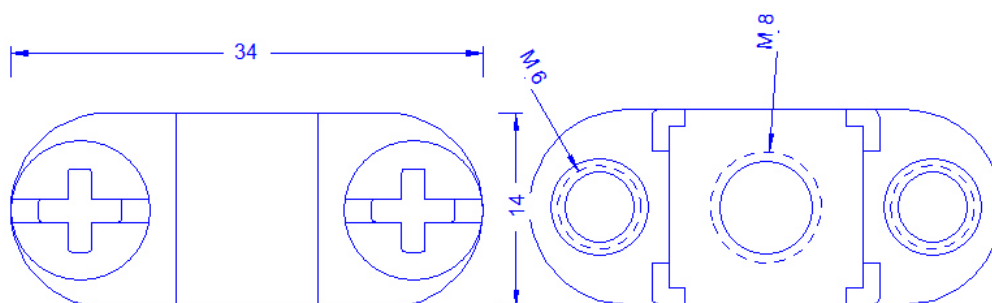
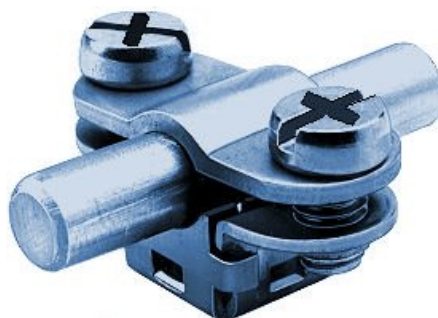


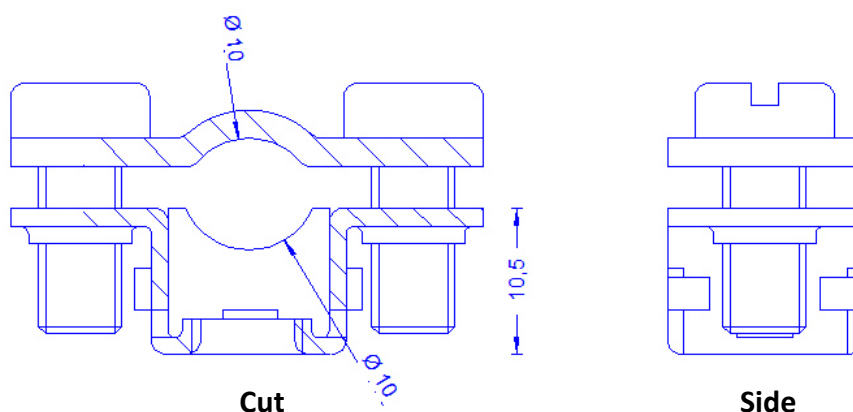
Specification	Conductor holder for 6-11mm, clamping. Conductor height 7,5mm, with stainless steel combined slot screws. Weight: 19,5g Reference Standard: DIN EN 62561-4
Article No.	10 56 10

Customs tariff No.: 85389099



Top

Bottom



Cut

Side

Description	
Holder	Conductor holder for 6-11mm, clamping, with thread M8 in the bottom, out of stainless steel 1.4301, with 2-screw cleat, with 2 combined slot screws M6X14 out of stainless steel.