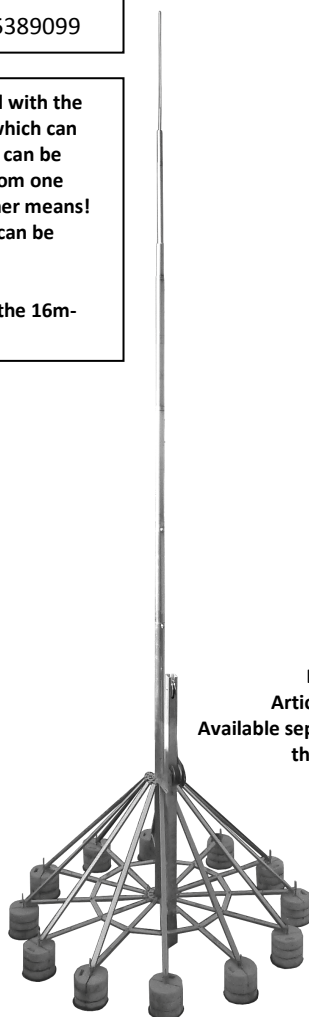


| | |
|----------------------|--|
| Specification | <p>Aluminum air termination mast multi-part with 12-leg support QR system out of aluminum. With 12 threaded pieces made of stainless steel. Height of the mast: 16,0m. Weight: 114 kg; Systemweight: 930 kg</p> <p>For wind speed zones I – IV For ground category III- IV (max. gust speed 155 km/h)</p> |
| Article No. | QR 01 35 |

Customs tariff No.: 85389099

This mast can be erected with the help of an erection aid, which can be ordered separately (it can be provided on loan, too) from one person without any further means! An assembly instruction can be provided.

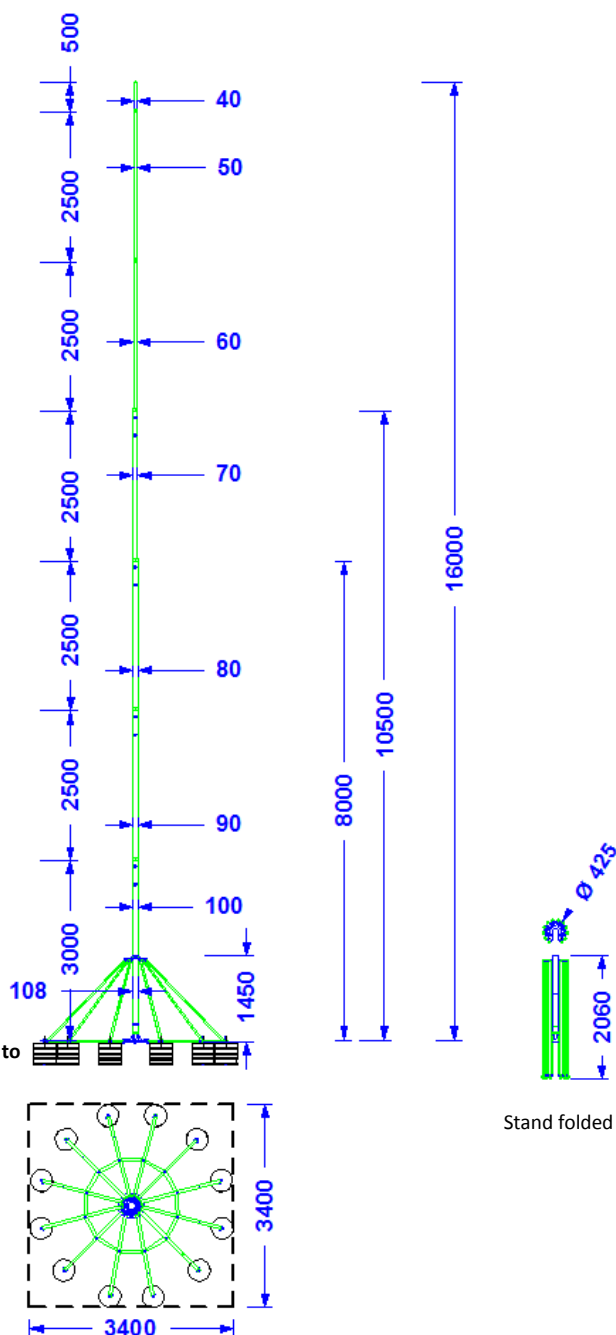
The transport length for the 16m-mast is only 3m!



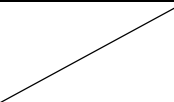
depicted is the mast with
the stand and the erection
aid.



Erection aid
Article no. QR 66 46.
Available separately (see text box to the upper left!)



Stand folded

| Description | Ø | Material | Length | Wind speed zone | Remarks |
|--------------------|---|-----------------------------|---|--|---|
| Mast main tube 1 | 1000 mm | Aluminium tube | 3,00 m | Wind speed zone I-IV (accord. to Euro Code 1 as well as DIN EN 1991 and DIN EN 1993. At 1,5-fold safety). Max. gust speed 175 km/h. Applicable for building heights below 40m and area heights below 600m above NN. Higher buildings or areas as well as icing and self-oscillation are to be considered. separately if necessary. | 1. All connections are made of stainless steel. 2. The concrete bases and the respective protective pads are not part of the product. 3. System-weight including the concrete bases: 930 kg. 4. Surface loading rate: 77,5 kg/m² 5. Slope adjustment up to 5° is possible. 6. Pack size: 3000mm long and 200mmØ Weight: 140 kg. 7. Weight of the mast 58 kg. 8. Weight of the stand 55 kg. |
| Mast main tube 2 | 90 mm | Aluminium tube | 2,50 m | | |
| Mast main tube 3 | 80 mm | Aluminium tube | 2,50 m | | |
| Mast main tube 4 | 70 mm | Aluminium tube | 2,50 m | | |
| Mast main tube 5 | 60 mm | Aluminium tube | 2,50 m | | |
| Mast main tube 6 | 50 mm | Aluminium tube | 2,50 m | | |
| Mast main tube 7 | 40 mm | Aluminium tube | 0,50 m | | |
| Standsegments |  | Aluminium | Support segments: 2000mm Foot segments: 1435mm | | |
| Stand central tube | 108 mm | Stainless steel tube 1.4301 | 1450 mm | | |