

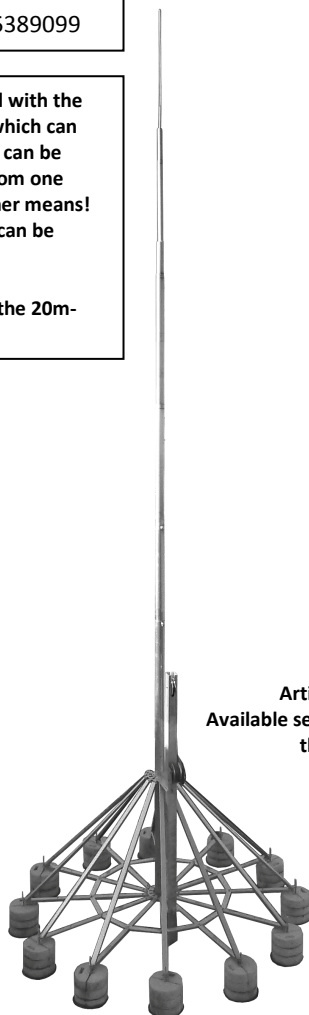
<b>Specification</b>	Aluminum air termination mast multi-part with 12-leg support QR system out of aluminum. With 12 threaded pieces made of stainless steel. Height of the mast: 20,0m. Weight: 160 kg; Systemweight: 1410 kg <b>For wind speed zones I – II</b> <b>For ground category III- IV</b> <b>(max. gust speed 145 km/h)</b>
<b>Article No.</b>	<b>QR 01 31</b>

Customs tariff No.: 85389099

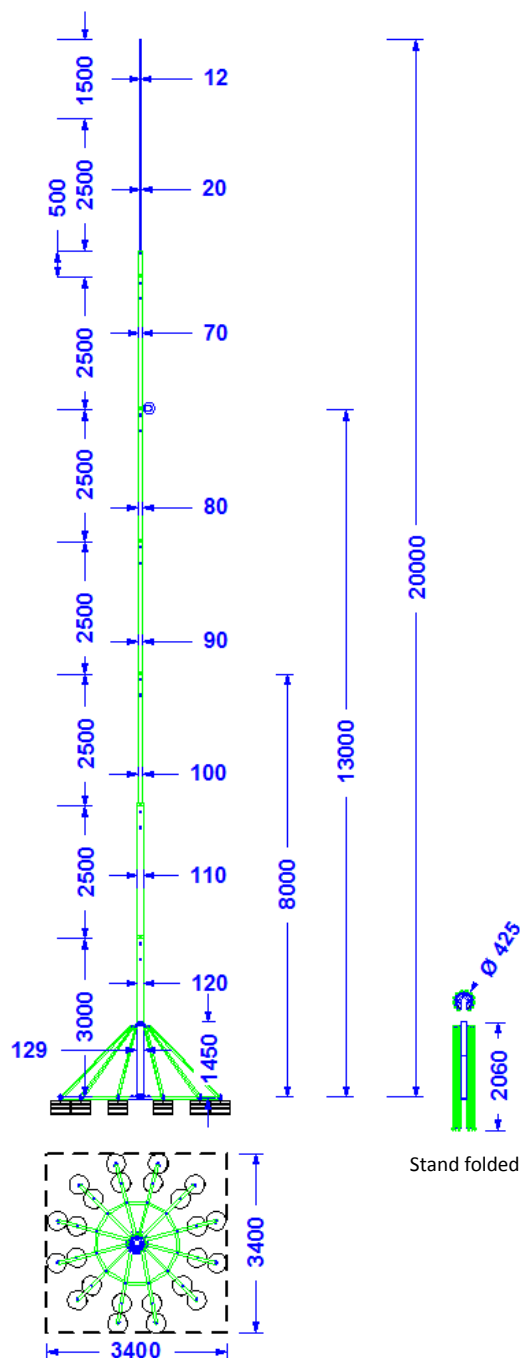
This mast can be erected with the help of an erection aid, which can be ordered separately (it can be provided on loan, too) from one person without any further means! An assembly instruction can be provided.

The transport length for the 20m-mast is only 3m!

depicted is the mast with the stand and the erection aid.



Erection aid  
Article no. QR 66 47.  
Available separately (see text box to the upper left!)



Description	Ø	Material	Length	Wind speed zone	Remarks
Mast main tube 1	120 mm	Aluminium tube	3,00 m	Wind speed zone I-II (accord. to Euro Code 1 as well as DIN EN 1991 and DIN EN 1993. At 1,5-fold safety). Max. gust speed 145 km/h. Applicable for building heights below 40m and area heights below 600m above NN. Higher buildings or areas as well as icing and self-oscillation are to be considered. separately if necessary.	1. All connections are made of stainless steel. 2. The concrete bases and the respective protective pads are not part of the product. 3. System-weight including the concrete bases: 1410 kg. 4. Surface loading rate: 120 kg/m <sup>2</sup> 5. Slope adjustment up to 5° is possible. 6. Pack size: 3000mm long and 200mmØ Weight: 160 kg. 7. Weight of the mast 85 kg. 8. Weight of the stand 55 kg.
Mast main tube 2	110 mm	Aluminium tube	2,50 m		
Mast main tube 3	100 mm	Aluminium tube	2,50 m		
Mast main tube 4	90 mm	Aluminium tube	2,50 m		
Mast main tube 5	80 mm	Aluminium tube	2,50 m		
Mast main tube 6	70 mm	Aluminium tube	3,00 m		
Mast tip	2,5m 20mm, 1,5m 12mm	Stainless steel rods	4,00 m		
Stand segments		Aluminium	Support segments: 2000mm Foot segments: 1435mm		
Stand central tube	129 mm	Stainless steel tube 1.4301	1450 mm		