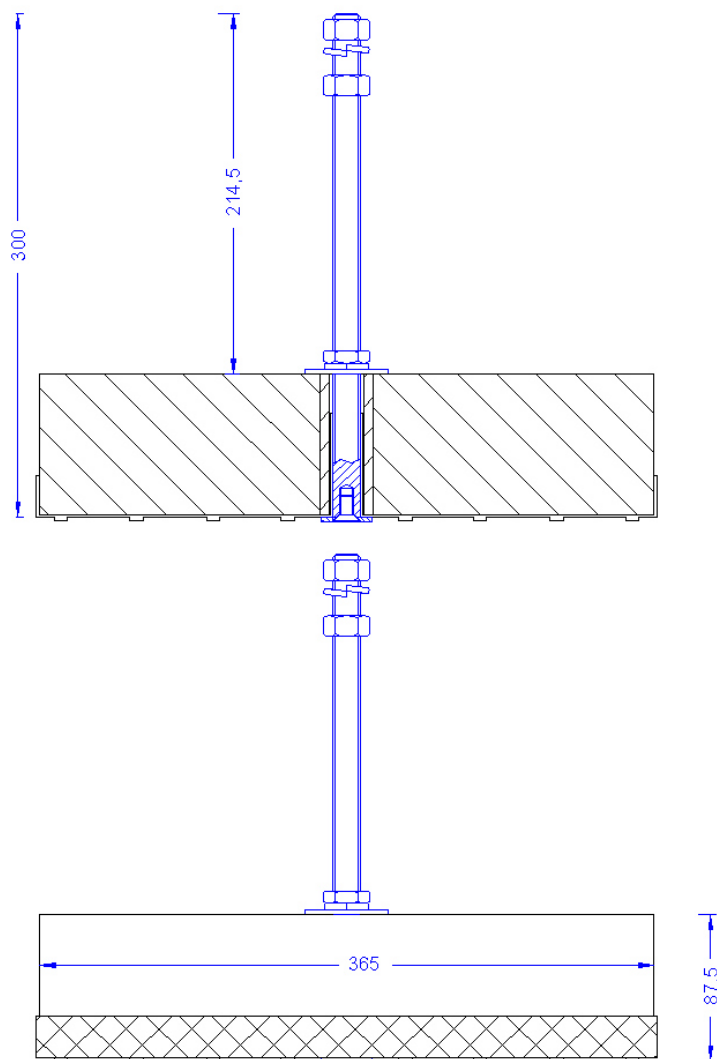


<b>Description</b>	Concrete socket 1x16 kg. With threaded rod M16x300. Screwed. Weight: 16,5kg
<b>Article number</b>	48 03 44



Image similar



<b>Description</b>	
<b>Weight</b>	16,5 kg
<b>Nuts/Spring washers (all stainless steel)</b>	2xDIN934M16;1xDIN936 flat/2xspring washer 16
<b>Concrete sockets</b>	1 x 16kg with $\varnothing$ 36,5cm with central borehole 20mm made of concrete (C45/55).
<b>Protective pad</b>	1 x 370mm $\varnothing$ made of black PVC
<b>Threaded rod</b>	M16 x 300mm with retaining disc 30mm. Stainless steel.