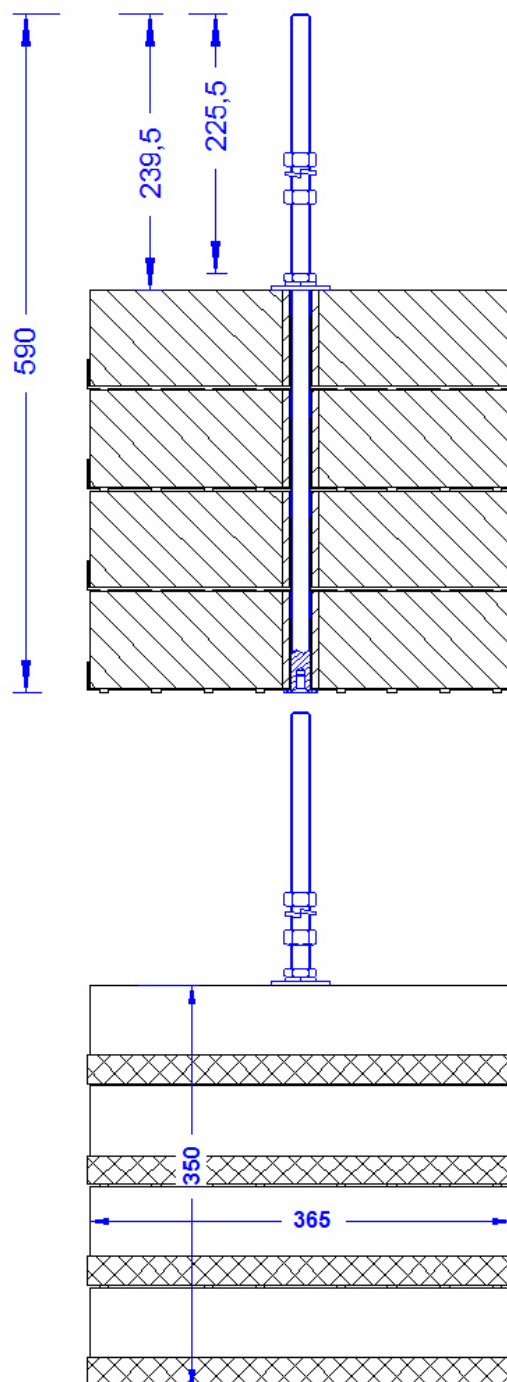


Description	Concrete socket 4x16 kg. With threaded rod M16x590. Screwed. Weight: 69kg
Article number	48 03 43

Customs tariff No.: 85389099



Description	
Weight	68 kg
Nuts/Spring washers (all in stainless steel)	2xDIN934M16;1xDIN936FLACH/2xFederring 16
Concrete sockets	4 x 16kg with 36,5cm Ø with central borehole 20mm made of concrete (C45/55).
Protective pad	4 x 370mm Ø made of black PVC
Threaded rod	M16 x 590mm with retaining disc 30mm. Stainless steel.