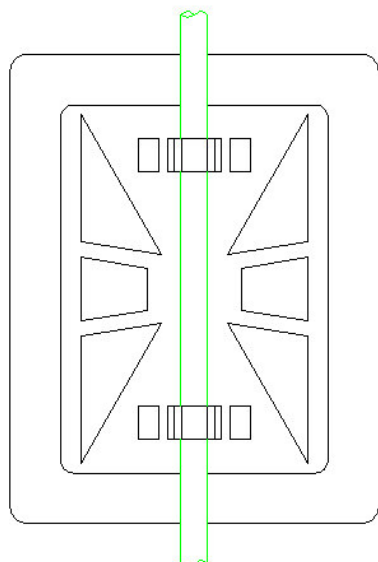
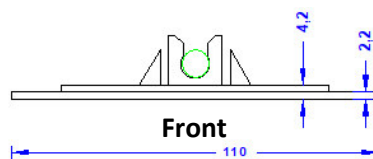
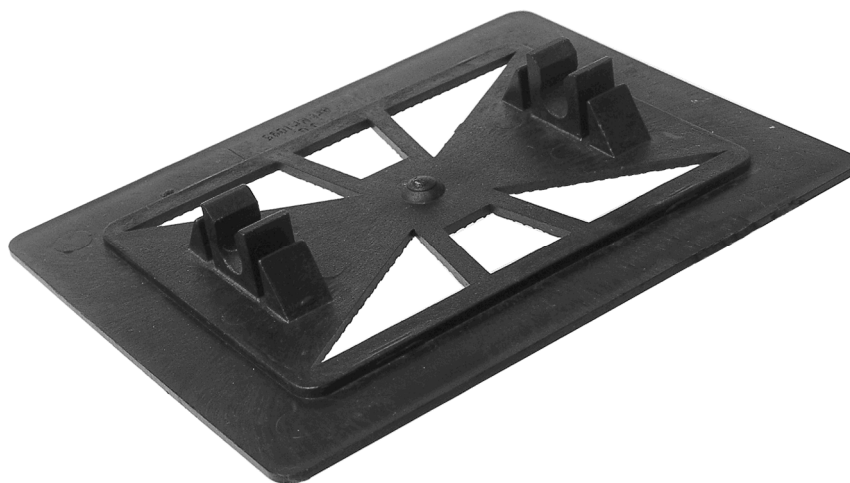


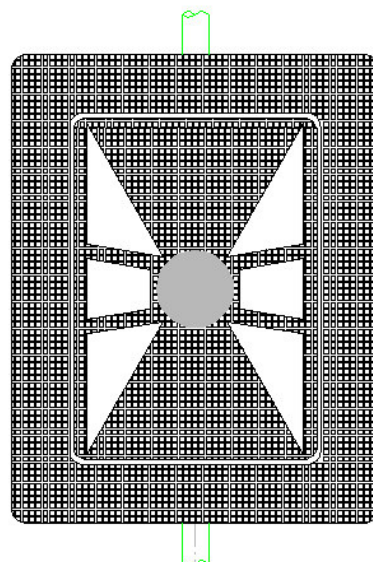
Specification	Adhesive plate for flat roofs, for round cond. 8mm, high 10mm. To be glued on hot and cold bitumen. Weight: 36g
Article No.	46 31 16

Customs tariff No.: 85389099

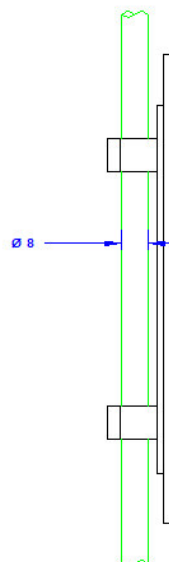
DIN EN62561-4: „This standard **does not cover** the fixing of conductor fasteners to the fabric/membrane/ gravel roofing of structures due to the vast number and types used in modern day construction.“



Top



Bottom



Side

Description	
Material	Polycarbonate, black
Conductor leading	8mm
Conductor high	10mm