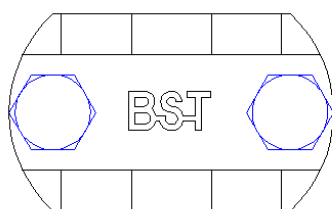
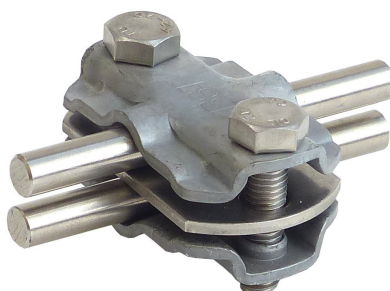
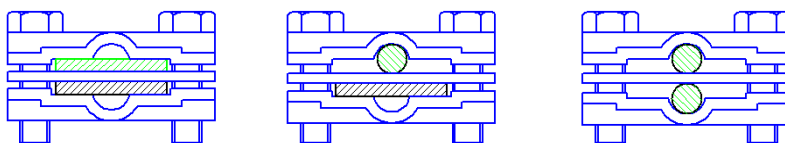


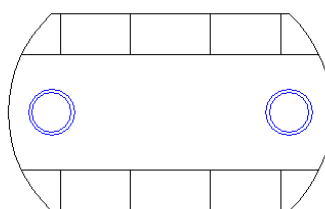
<b>Specification</b>	<b>Connecting-disconnecting clamp, for connection: 2x flat till 30mm or 1 x flat 30mm and 1 x round conductor Ø 8-10mm or 2 x round conductor 8 - 10mm. With intermediate plate..</b> <b>Hot galvanized steel.</b> <b>Weight: 138g</b> <b>Reference Standard DIN EN 62561-1</b>
<b>Article No.</b>	<b>49 60 20</b>

Customs tariff No.: 85389099

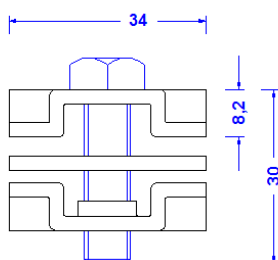
**Configuration options:**



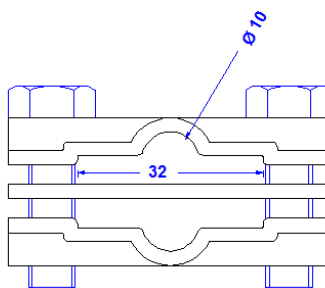
**Top**



**Bottom**



**Side**



**Front**

<b>Description</b>	RoHS2 (Guideline 2011/65/EU) and REACH (Regulation (EG) No.1907/2006): The substance-requirements and all other requirements of these regulations are observed by this product.
<b>Material of the clamp</b>	<b>Hot galvanized steel</b>
<b>Screws</b>	<b>2 x DIN933M8X30 stainless steel</b>
<b>Take-up round/flat conductor</b>	<b>1 x Ø 8-10mm / 1 x flat till 30mm or 2 x flat till 30mm or 2 x round conductor 8 - 10mm</b>