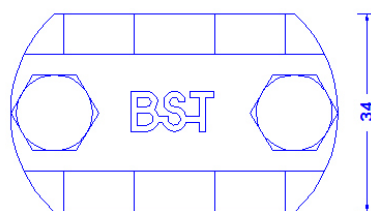
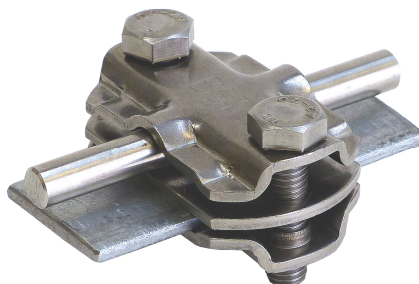
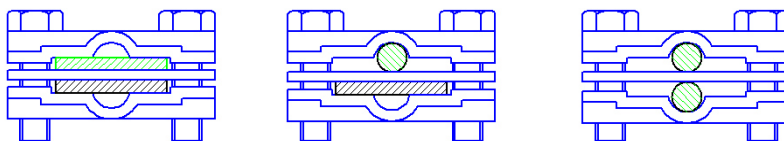


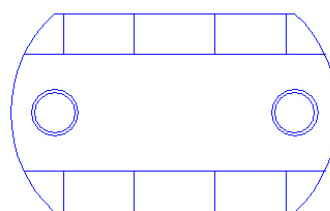
| | |
|----------------------|--|
| Specification | Connecting-disconnecting clamp, for connection: 2x flat till 30mm or 1 x flat 30mm and 1 x round conductor Ø 8-10mm or 2 x round conductor 8 - 10mm. With intermediate plate. Stainless steel. Weight: 130g Reference Standard DIN EN 62561-1 |
| Article No. | 49 60 21 |

Customs tariff No.: 85389099

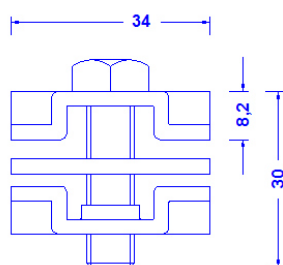
Configuration options:



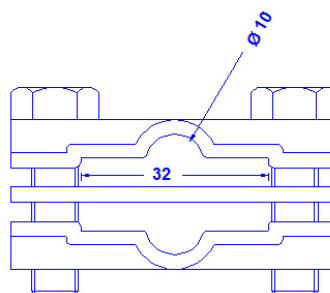
Top



Bottom



Side



Front

| | |
|-------------------------------------|---|
| Description | RoHS2 (Guideline 2011/65/EU) and REACH (Regulation (EG) No.1907/2006): The substance-requirements and all other requirements of these regulations are observed by this product. |
| Material of the clamp | Stainless steel 1.4301 |
| Screws | 2 x DIN933M8X30 stainless steel |
| Take-up round/flat conductor | 1 x Ø 8-10mm / 1 x flat till 30mm or 2 x flat till 30mm or 2 x round conductor 8 - 10mm |