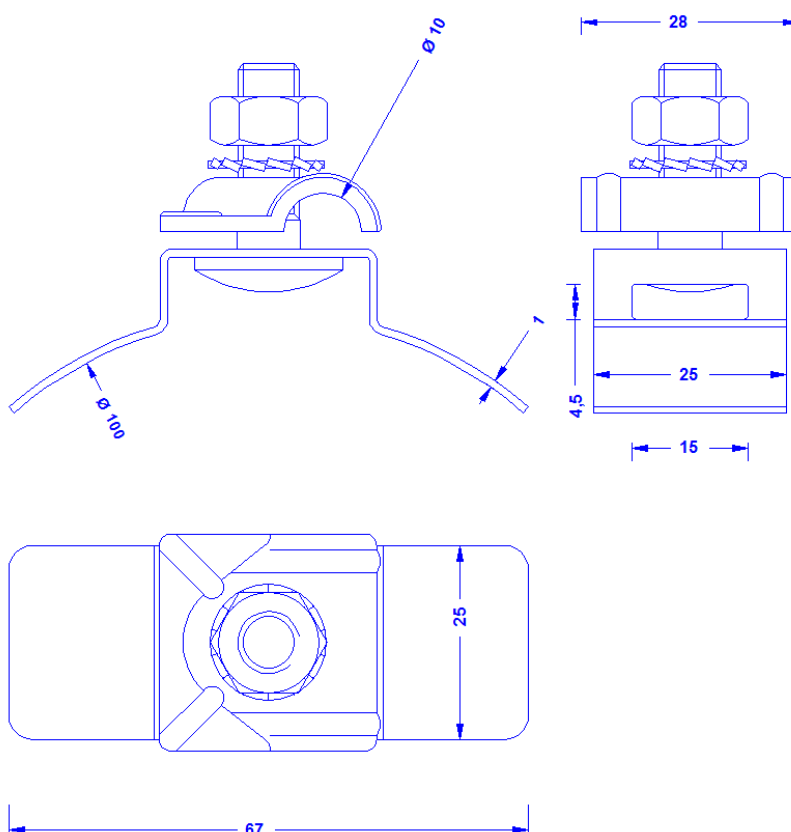


|                      |  |
|----------------------|--|
| <b>Specification</b> | Clamp Part for pipe clamps with a width of max. 15 mm with mounted small uni-clamp for conductor 6-11mm Ø. Stainless steel.<br>Weight: 48g<br>Reference Standard: DIN EN 62561-1 |
| <b>Article No.</b>   | <b>37 33 11</b>  |

Customs tariff No.: 85389099



|  |  |
|--|--|
| <b>Description</b>                                 | RoHS2 (Guideline 2011/65/EU) and REACH (Regulation (EG) No.1907/2006): The substance-requirements and all other requirements of this regulations are observed by this product. |
| Material of the Clamp Part                         | Stainless steel 1.4301   |
| Clamp  | Small uni-clamp for conductor 6 - 11mm Ø.<br>Stainless steel 1.4301.   |
| Screw/Nut/serrated washer (all in stainless steel) | DIN603M8X25 /DIN934M8 / DIN6798A-8,4   |