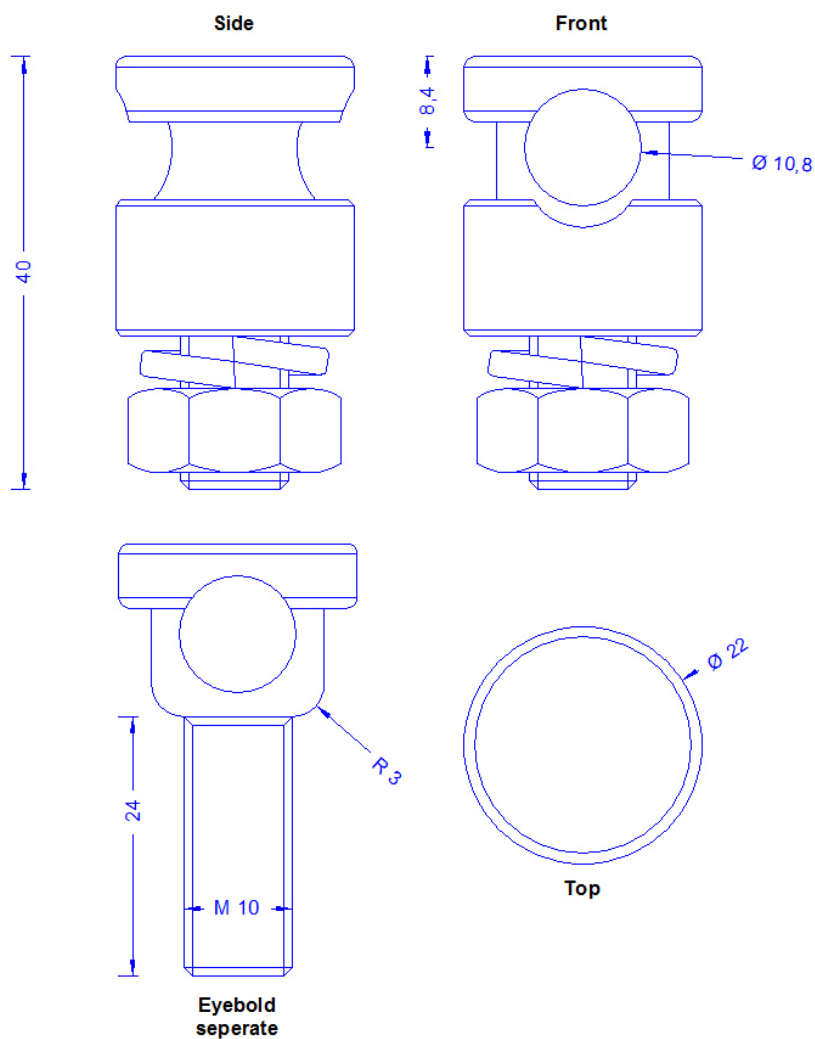


Specification	Clamping screw connector for 7-11mm round conductor, with thread M10 with nut and spring washer. Stainless steel. Reference Standard: DIN EN 62561-1
Article No.	52 01 10

Customs tariff No.: 85389099



Description	
Material of the eye bolt	Stainless steel 1 4301
Material of the clamp	Stainless steel 1 4301
Screw connection nut/spring washer (all stainless steel)	DIN934M10/spring washer 10 mm
Conductor leading	7-11mm