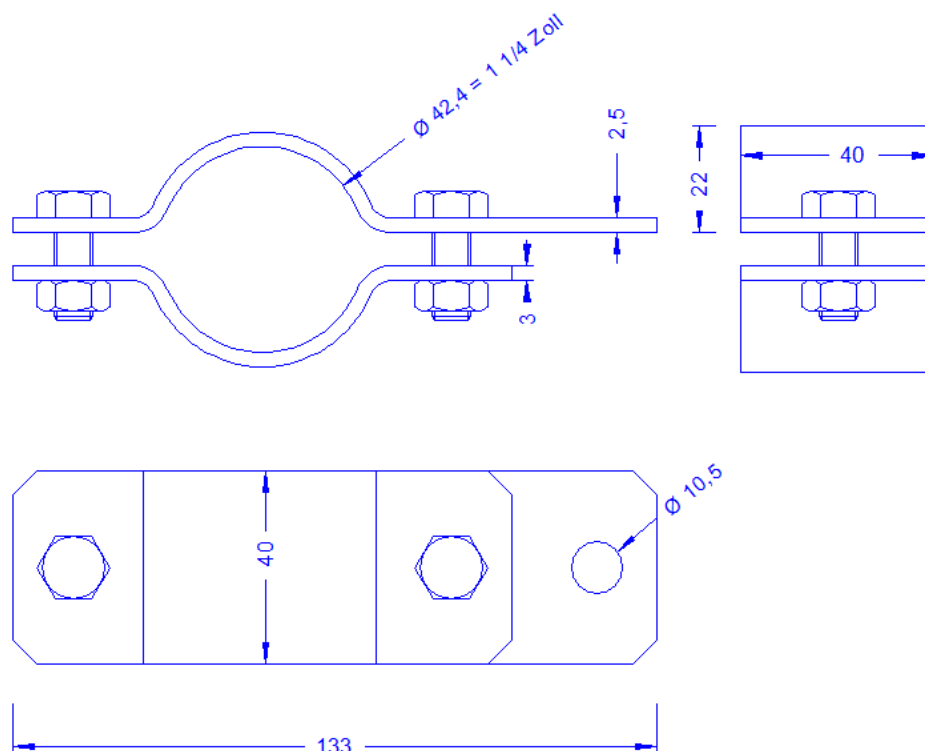
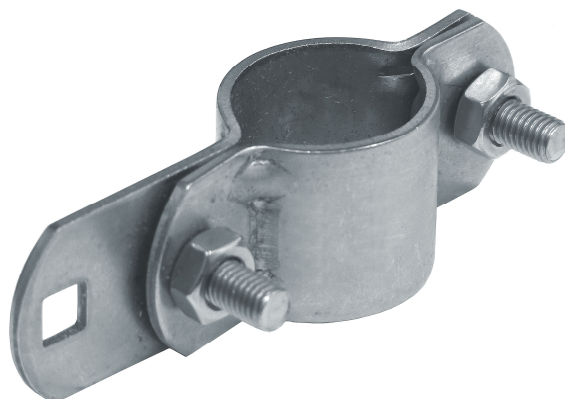


<b>Specification</b>	<b>Water pipe clamp , 1 1/4 inch (42,4mm Ø), 40mm wide with a stainless steel screw connection. Made of stainless steel.</b> <b>Weight: 300g</b> <b>Reference Standard DIN EN 62561-1+DIN48818</b>
<b>Article No.</b>	<b>53 05 10</b>

Customs tariff No.: 85389099



<b>Description</b>	RoHS2 (Guideline 2011/65/EU) and REACH (Regulation (EG) No.1907/2006): The substance-requirements and all other requirements of this regulations are observed by this product.
<b>Material of the clamp</b>	Stainless steel 1.4301.
<b>For pipe diameter</b>	1 1/4 inch (= 42,4mm Ø)
<b>Screws/nuts/serrated washer (all made of stainless steel)</b>	2 x DIN933M8X25 / 3 x DIN934M8