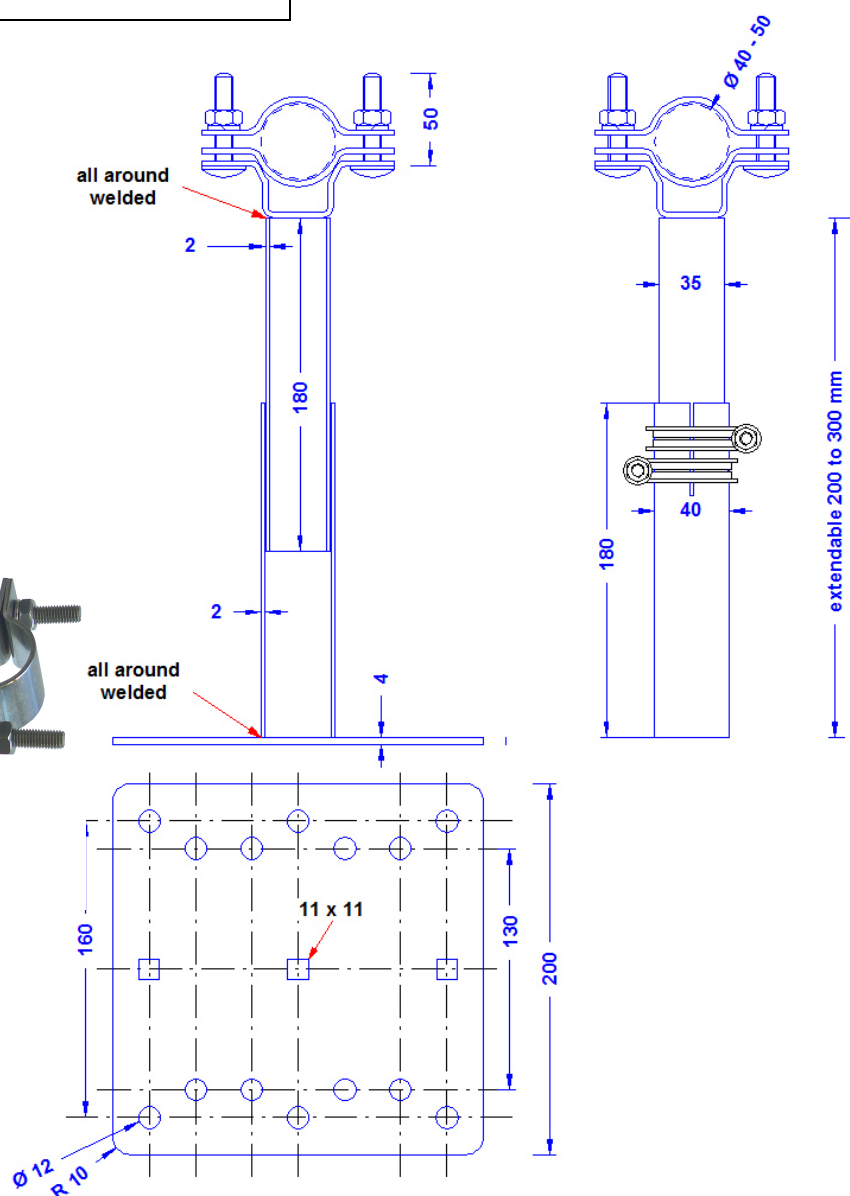
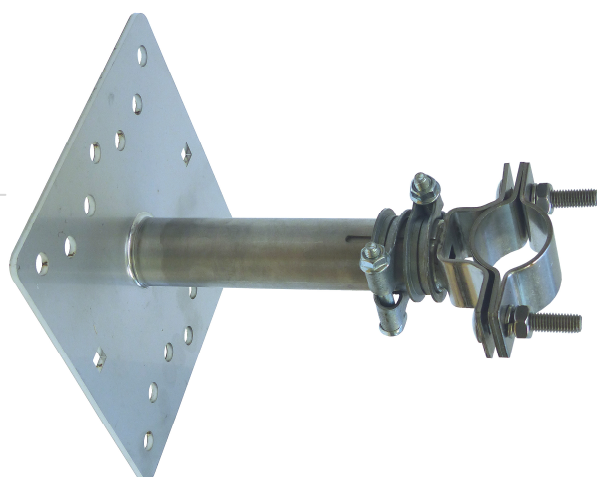


Specification	Telescope clamp for the fixing of masts 40-50mm Ø to the wall. For a variable wall distance of 200-300mm. Weight: 2,5 kg Stainless steel 1-4301
Article No.	68 01 35

Customs tariff No.: 85389099

All supporting connections are welded.



Description	RoHS2 (Guideline 2011/65/EU) and REACH (Regulation (EG) No.1907/2006): The substance-requirements and all other requirements of this regulations are observed by this product.
Material of the clamp/ of the wall holder	Stainless steel 1-4301
Fit of the clamp	For pipes 40-50mm Ø
Screws/nuts/spring washers (all stainless steel)	2 x DIN603M10X50/ 2 x DIN934M10/ 2 x spring washer 10mm
Clamps for the telescope	For Pipes-Ø 40mm with screws M8. Hot dip galvanized steel.