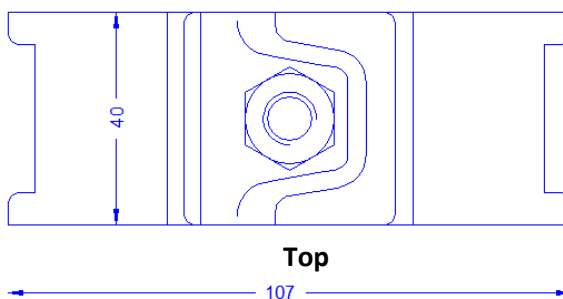
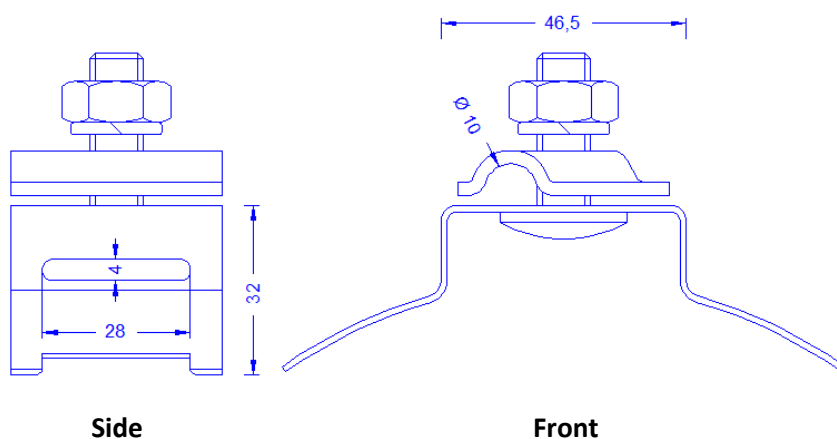
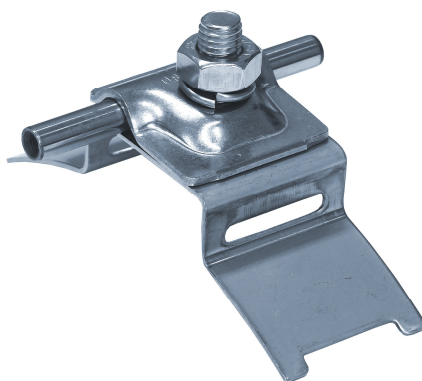


<b>Specification</b>	<b>Connection part for Endless pipe clamps with 25mm. For usable for pipes from 100mm Ø on. With a stainless steel clamp for conductors 8-10mm Ø. Stainless steel. Weight: 147g Reference Standard: DIN EN 62561-1</b>
<b>Article No.</b>	<b>36 60 37</b>

Customs tariff No.: 85389099



<b>Description</b>	<b>RoHS2 (Guideline 2011/65/EU) and REACH (Regulation (EG) No.1907/2006):</b> The substance-requirements and all other requirements of this regulations are observed by this product.
Material of the connection part	Stainless steel1.4301
Clamp	Universal-clamp for 8-10mm Ø conductor out of stainless steel 1.4301
Screw/nut/spring washer (all stainless steel)	DIN603M10X30/DIN934M10/10mm