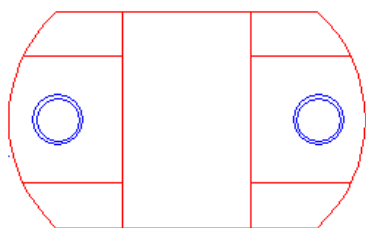
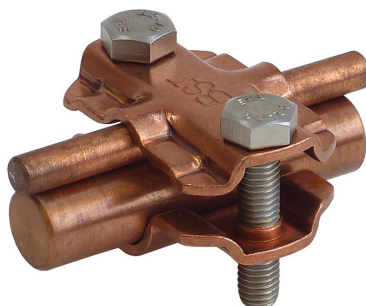
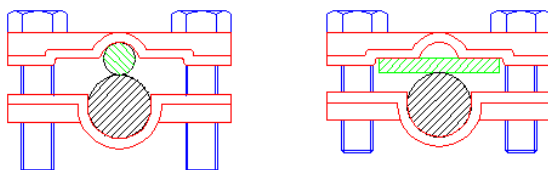


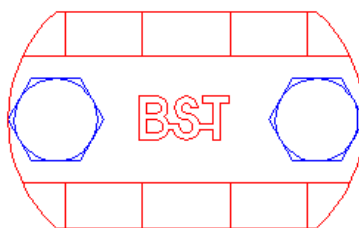
Specification	Connecting-disconnecting clamp for the connection: See below. Without intermediate plate. Copper. Weight: 111g Reference standard DIN EN 62561-1
Article No.	49 60 25

Customs tariff No.: 85389099

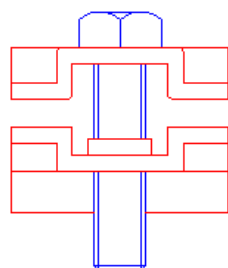
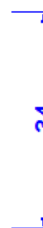
Configuration options:



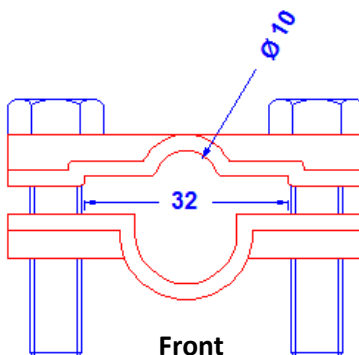
Top



Bottom



Side



Front



Description	RoHS2 (Guideline 2011/65/EU) and REACH (Regulation (EG) No.1907/2006): The substance-requirements and all other requirements of these regulations are observed by this product.
Material of the clamp	Copper
Scews	2 x DIN933M8X35 Stainless steel
Pick up flat/round conductor	1 x Ø 8-10mm and 1 x flat conductor till 30mm or 1 x flat conductor till 30mm and 1 x rod Ø 16mm or 1 x Ø 8-10mm and 1 x rod Ø 16mm