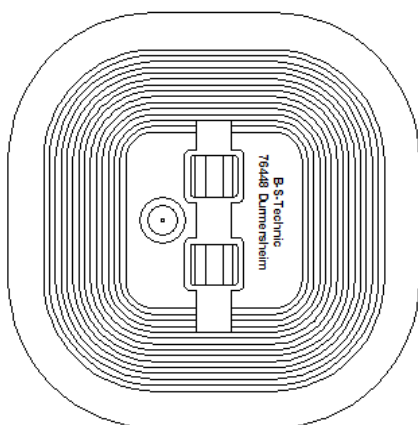


<b>Specification</b>	Empty pyramid holdfast for flat roofs to suit 10mm conductor, to be filled with concrete. Made of polyethylene. Black. Weight: 80g
<b>Article No.</b>	<b>45 10 16</b>

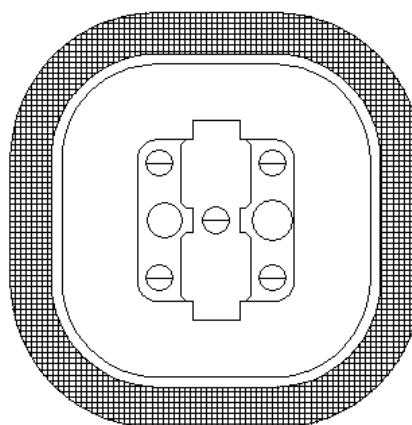
Customs tariff No.: 85389099

**DIN EN 62561-4:**

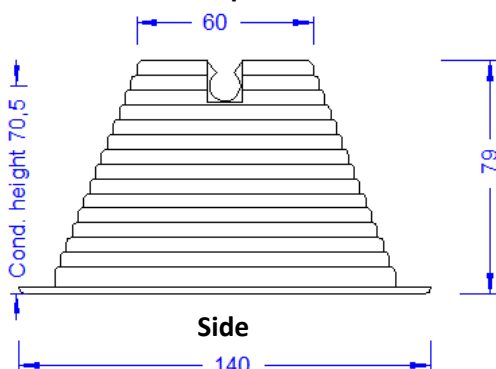
„The fastening of holders to structures covered with tar paper, membrane and gravel roofs is not treated in the present standard due to the multitude of types which are used on modern constructions.“



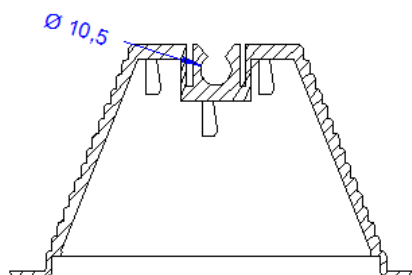
**Top**



**Bottom**



**Side**



**Cross-section**

<b>Description</b>	RoHS2 (Guideline 2011/65/EU) and REACH (Regulation (EG) No.1907/2006): The substance-requirements and all other requirements of this regulations are observed by this product.
<b>Input</b>	<b>10 mm conductor</b>
<b>Material of the holdfast</b>	<b>Polyethylene, black. No halogens; UV-stabilized and cold impact resistant.</b>