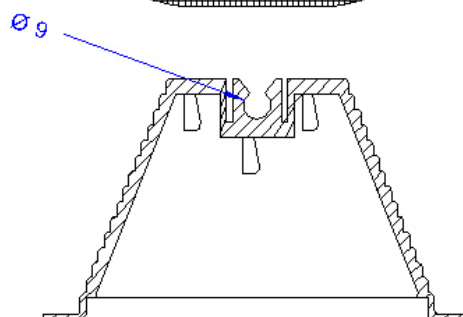
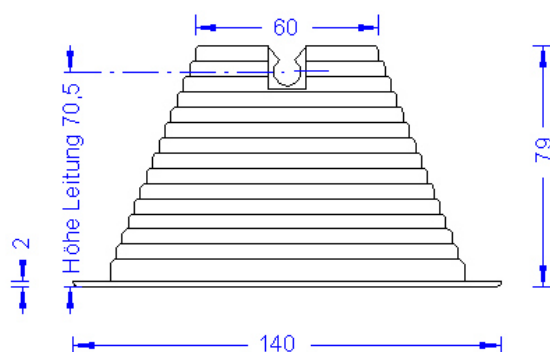
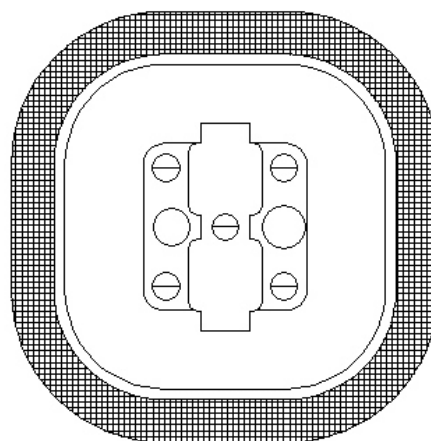
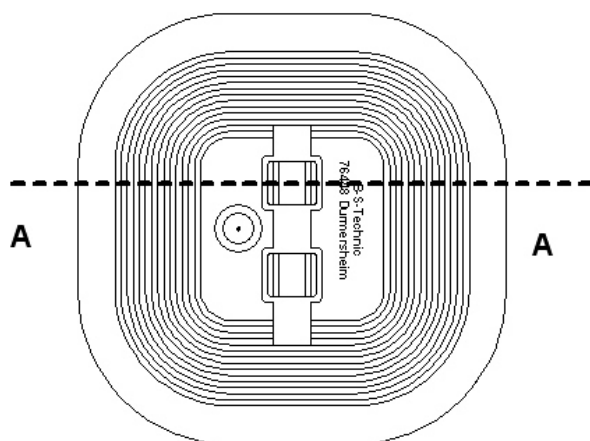
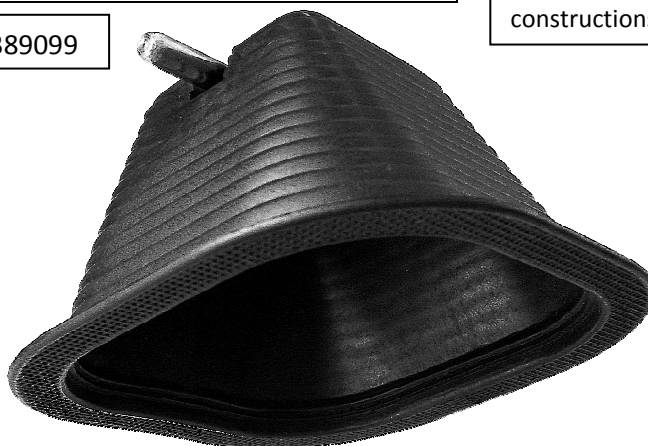


Specification	Empty pyramid holdfast for flat roofs to suit 8mm conductor, to be filled with concrete. Made of polyethylene. Black. Weight: 76g
Article No.	45 02 16

Customs tariff No.: 85389099

DIN EN 62561-4:

„The fastening of holders to structures covered with tar paper, membrane and gravel roofs is not treated in the present standard due to the multitude of types which are used on modern constructions.“



A-A

Description	RoHS2 (Guideline 2011/65/EU) and REACH (Regulation (EG) No.1907/2006): The substance-requirements and all other requirements of this regulations are observed by this product.
Input	8 mm conductor
Material of the holdfast	LD-PE Regrind, black. No halogens; UV-stabilized and cold impact resistant.