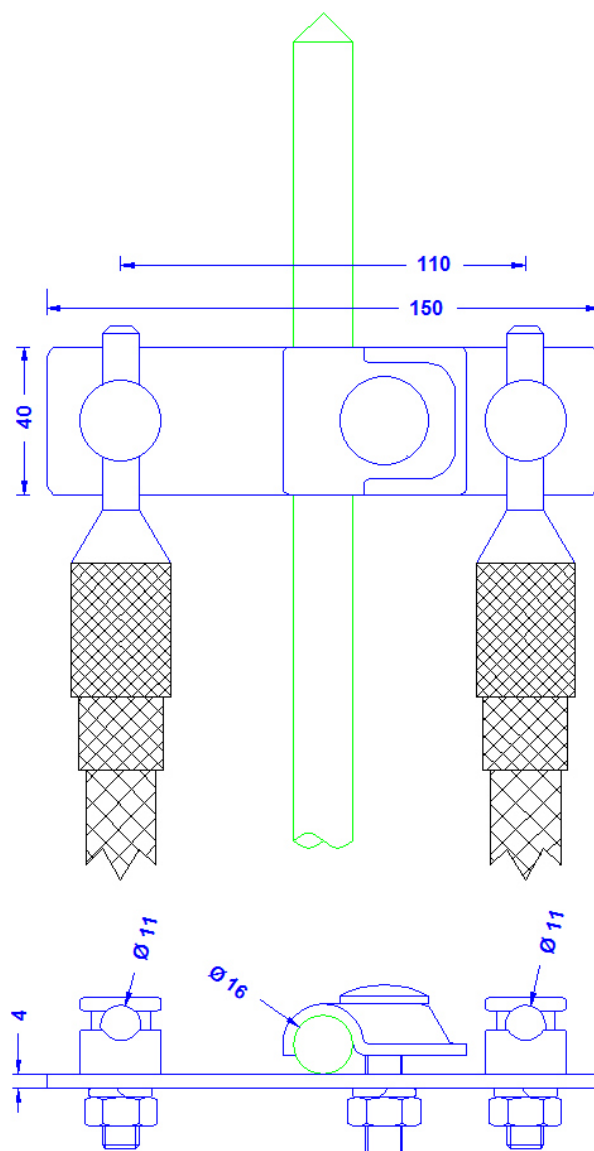
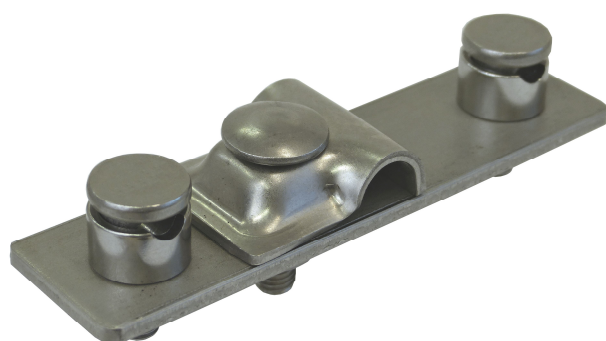


<b>Specification</b>	<p>Contact plate for connection of two conductors 8 – 10mm Ø with the air term. tip on the lightning protection mast (16mm Ø). Stainless steel.</p> <p>Weight: 400g</p> <p>Reference standard: DIN EN 62561-1</p>
<b>Article No.</b>	<b>68 00 28</b>

Customs tariff No.: 85389099

**For the external connection of two insulated conductors to an ISO-interception mast.**



<b>Description</b>	<p>RoHS2 (Guideline 2011/65/EU) and REACH (Regulation (EG) No.1907/2006): The substance-requirements and all other requirements of this regulations are observed by this product.</p>
Material of the screw plate	Stainless steel 1.4301
Material of the clamp	Stainless steel 1.4301
Fit of the clamp	16mm Ø
Scews/nuts/spring washers (all stainless steel)	1 x DIN603M10X40; 2 x eyebolt 7-11/3 x DIN934M10/ 3 x spring washer 10.