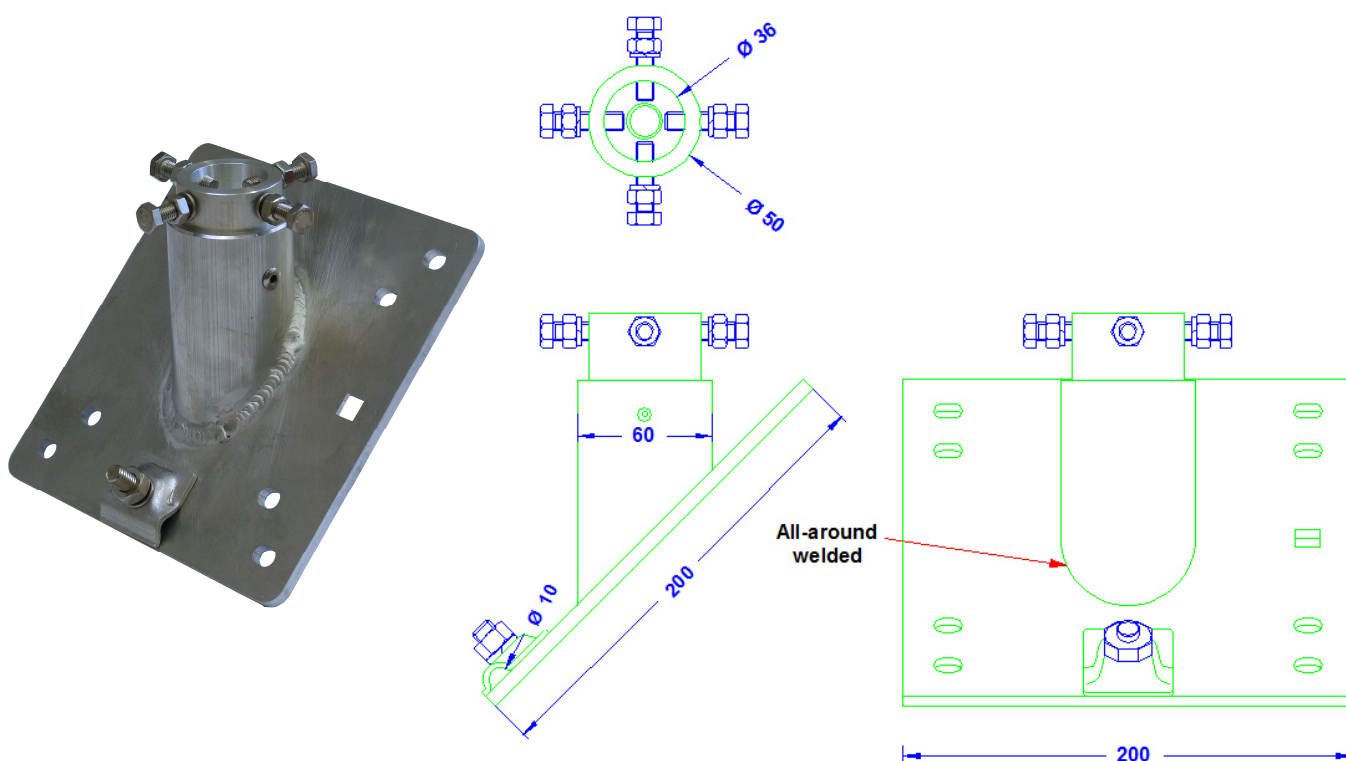


Specification	Wall Fixing plate for air termination rods on surfaces with level compensation till 10°. Plate welded in a 45° square. Aluminium. Weight: 1062g
Article No.	68 08 30

Customs tariff No.: 85389099



Description	RoHS2 (Guideline 2011/65/EU) and REACH (Regulation (EG) No.1907/2006): The substance-requirements and all other requirements of this regulations are observed by this product.
Material of the socket / wall plate	Aluminium
Fitting of the socket	Rods 16 - 22mm Ø
Clamp	For 8 - 10mm wire. Aluminium.
Screws/nuts/spring washer	1 x DIN603M10x35, 4 x DIN933M8x25/ 1 x DIN934M10; 4 x DIN934M8/ 1 x M10; 4 x M8. All made of stainless steel.