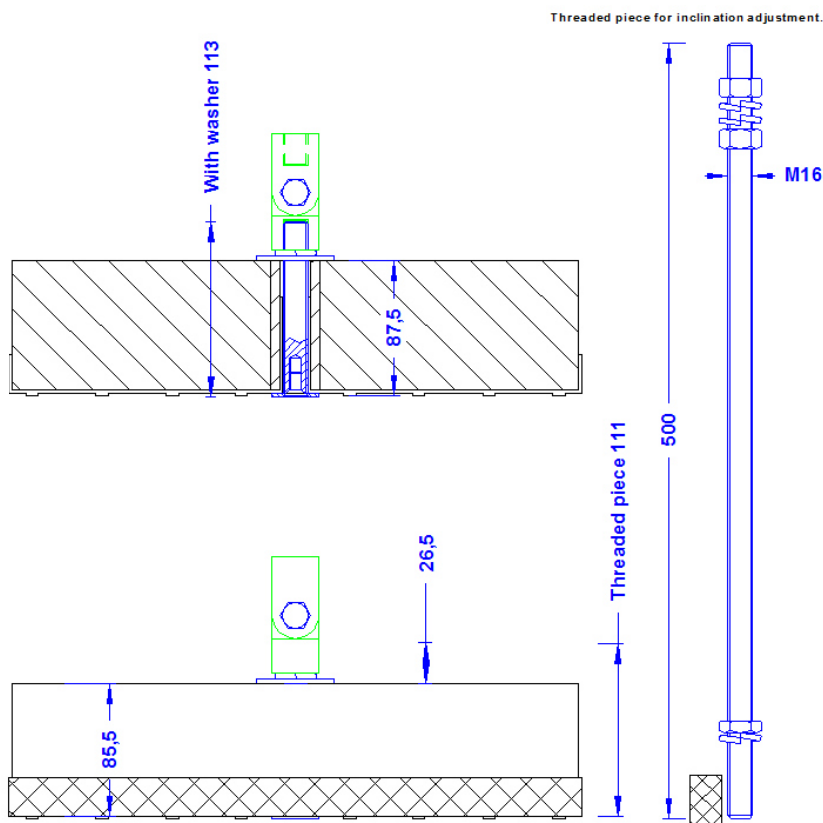


CSpecification	Concrete socket 1x16 kg, 36,5cm Ø. Height 175mm, with hole Ø 20mm, with protective pad, with joint and extra threaded piece 500mm. Weight: 18 kg
Article No.	48 03 66

Customs tariff No.: 85389099



Description	
Weight of the concrete socket	16 kg
Joint	Out of aluminum, with hexagon screw M10x40mm, stop nut M10 and spring washer 10mm, stainless steel.
Material of the concrete socket	Beton (C45/55)
Threaded piece (all in stainless steel; enclosed)	16mm threaded piece with 2 x nut DIN934M16, 1 x nut DIN936M16 flat and 3 x spring washer 16mm.
Threaded piece in the concrete socket (all stainless steel)	16mm threaded piece with washer 30mm and screw DIN7991M8X16.
Protective pad	Out of black polypropylene as protection for the roofing film.