

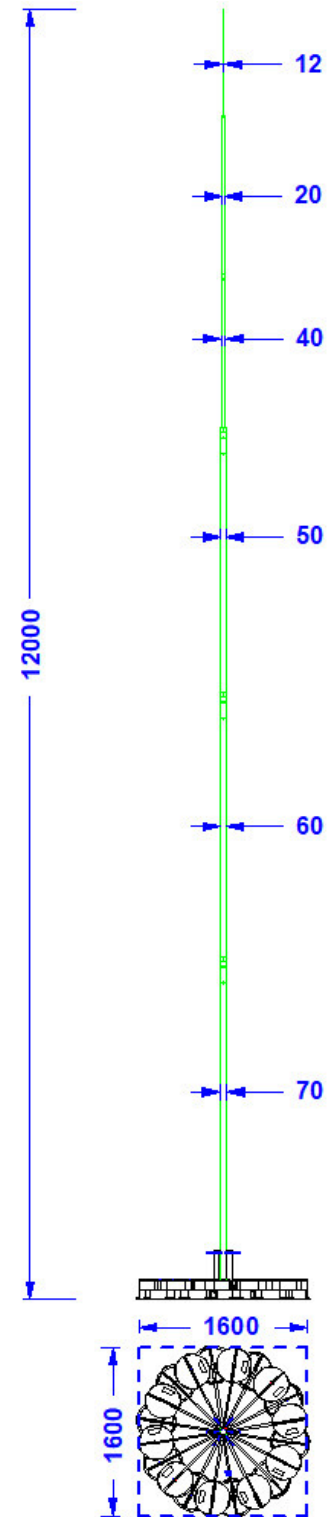
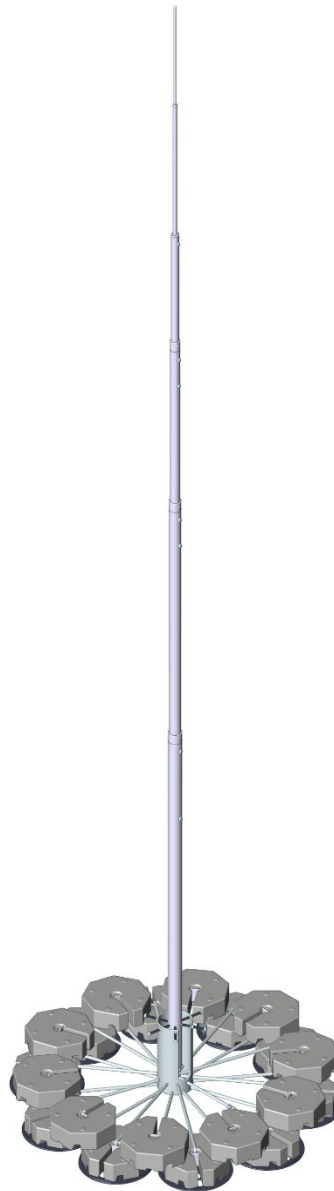
Specification	<p>Aluminum interception mast with a welded 20-leg base made of galvanized steel for 20 concrete bases, 17 kg. Height of the interception mast: 12 m.</p> <p>System weight (including concrete bases): 395 kg</p> <p>Calculated for wind speed zones III – IV For ground category III - IV (max. gust speed: 175 km/h)</p>
Article No.	48 54 90

Custom tariff no.:
85389099

RoHS2 (Directive 2011/65/EU) and REACH (Regulation (EC) No. 1907/2006):
This product complies with the substance requirements and other requirements of these

The concrete bases and the protective plates are not part of the product.

Possible roof pitch compensation: 9°



Description	∅	Material	Length	Wind speed zone	Remarks
Mast main tube 1	70mm	Aluminum	3,0m	Wind speed zone I-VI (accord. to DIN1055; 4131; 18800. At 1,5-fold safety) Applicable for building heights below 40m und area heights below 600m above NN. Higher buildings or areas as well as icing and self-oscillation are to be considered separately if necessary.	<ol style="list-style-type: none"> All connections are made of stainless steel. The concrete bases and the respective protective pads are not part of the product. System-weight including the concrete bases: 395 kg. Surface loading rate: 155 kg/m² Connection clamp 8-10mm made of stainless steel. Technical changes reserved.
Mast main tube 2	60mm	Aluminum	2,5m		
Mast main tube 3	50mm	Aluminum	2,5m		
Mast main tube 4	40mm	Aluminum	1,5m		
Mast tip	1,5m 20mm, 1m 12mm	Aluminum rods	2 x 1m		
Support segments	16mm	Galvanized steel rods			
Support Central tube	178mm	Galvanized steel tube	395mm		