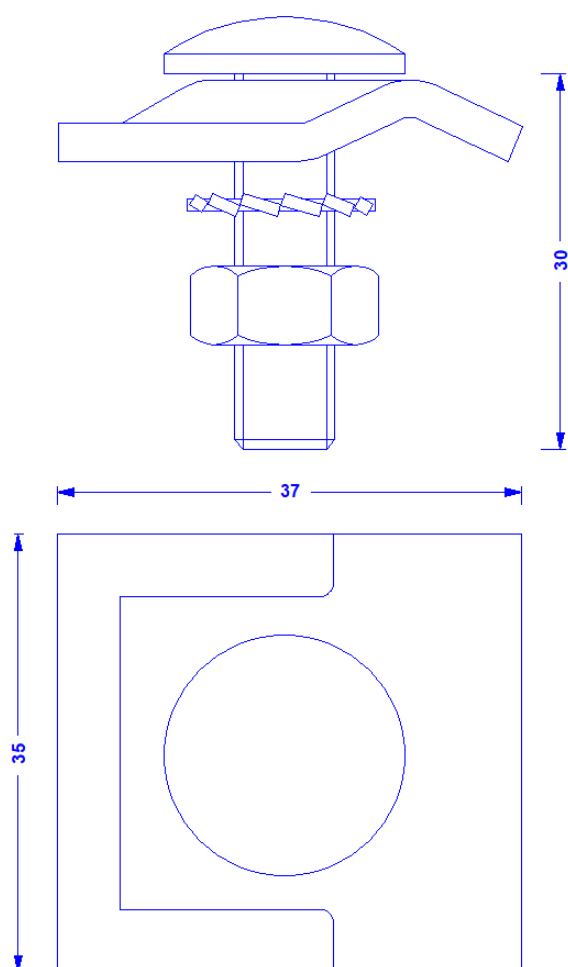


Specification	Midi universal clamp for 6–8 mm conductor, single half, with stainless steel screw connection. Stainless steel 1.4301. Weight: 55g Reference Standard: DIN EN 62561-1
Article-No.	42 20 15

Customs tariff No.: 73269098



Description	RoHS2 (Guideline 2011/65/EU) and REACH (Regulation (EG) No.1907/2006): The substance-requirements and all other requirements of this regulations are observed by this product.
Material of the clamp	Stainless steel 1.4301
Conductor leading	6-8mm
Screw connection (all stainless steel)	DIN603M8, Nut M8; Serrated disc 8mm