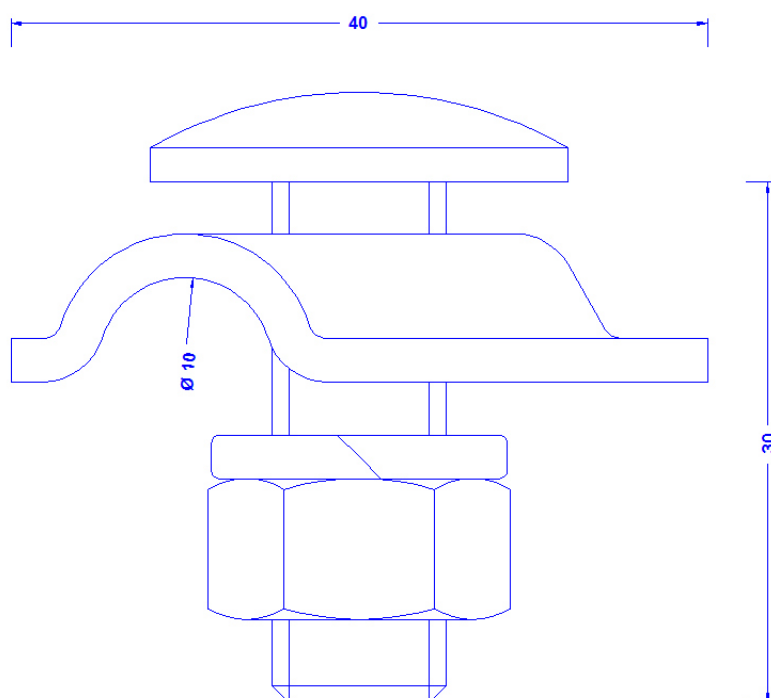


Specification	Multi-purpose clamp for 8 - 10mm, only one half, with stainless steel screw connection. Stainless steel 1.4301. Weight: 72g Reference Standard : DIN EN 62561-1
Article No.	42 16 12

Customs tariff No.: 85389099



Description	RoHS2 (Guideline 2011/65/EU) and REACH (Regulation (EG) No.1907/2006): The substance-requirements and all other requirements of this regulations are observed by this product.
Material of the clamp	Stainless steel 1.4301
Conductor leading	8-10mm
Screw connection (all stainless steel)	DIN603M10X30, nut M10; spring washer 10mm