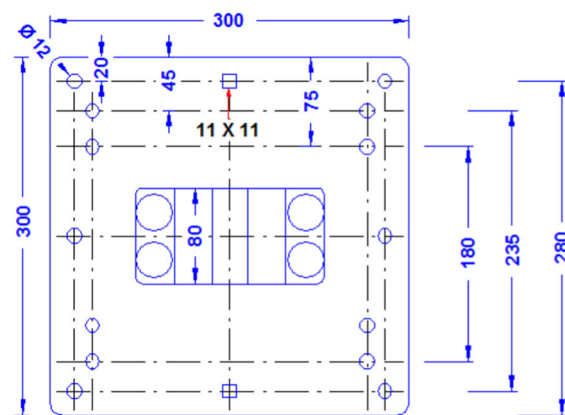
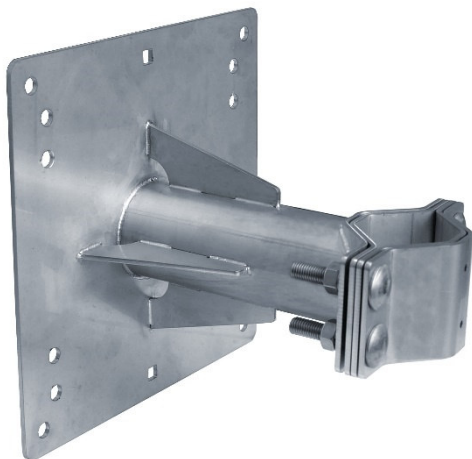


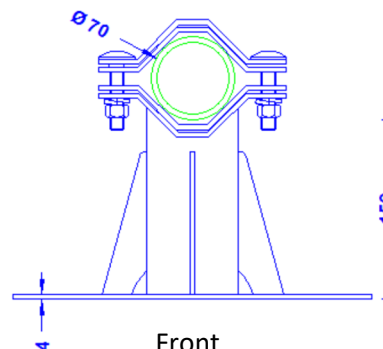
Specification	<p>Dual- pipe clamp for the fixing of masts 70-80mm Ø on the wall. Wall distance 150mm. For masts till 12,0m height (by using two clamps). Weight: 5,6 kg Stainless steel 1-4301</p>
Article No.	68 04 37

Customs tariff No.: 85389099

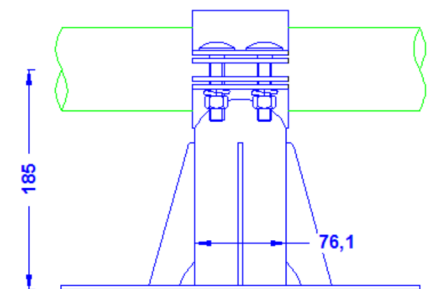
**All load bearing
connections are
welded.**



Top



Front



Side

Description	<p>RoHS2 (Guideline 2011/65/EU) and REACH (Regulation (EG) No.1907/2006): The substance-requirements and all other requirements of this regulations are observed by this product</p>
Material of the clamp/ the wall plate	Stainless steel 1-4301
Fitting of the clamp	For tubes 70-80mm Ø
Screws/nuts/spring washers (all stainless steel)	2 x DIN603M12X60/ 2 x DIN934M12/ 3 x spring washer 12mm